

Classic Lighting

Lighting for
your Home,
your Haven,
your Sanctuary.



TABLE OF CONTENTS

CLASSIC

Collections



Versailles
pg 3-10



Bohemia
pg 11-15



Monticello
pg 16-18



Prague
pg 19-22



Silver Maria Theresa
pg 23-28



Gold Maria Theresa
pg 29-49



Commercial Maria Theresa
pg 35-49



Via Veneto
pg 50-61



Via Firenze
pg 62-70



Madrid Imperial
pg 71-72



Madrid
pg 73-74



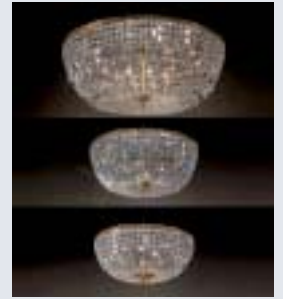
Princeton
pg 75-80



Princeton II
pg 81-84



Barcelona
pg 85-89



Crystal Baskets
pg 90-91



Regency II-Gold
pg 93-96



Regency II-Chrome
pg 97-98



Princess
pg 99-102



Regency
pg 103-104



Crown Jewels
pg 105-106



Emily
pg 107-108



Merlot
pg 109-110



Tivoli
pg 111-112



Daniele
pg 113-116



Grace
pg 117-118

TABLE OF CONTENTS

CLASSIC

Collections



Ambassador
pg 119-124



Empress
pg 125-126



Uptown
pg 127



Diamante
pg 128



Solitaire
pg 129-130



Sprays
pg 131-132



Beverly Hills
pg 133



Cheryl's Christmas Trees
pg 134-140



Venezia
pg 141



Parisian
pg 142



Dylan
pg 143-144



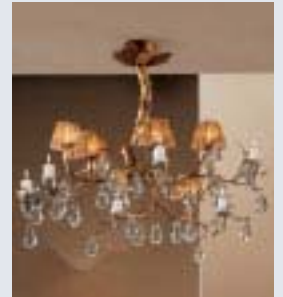
Florentine
pg 145-146



Harvest Moon
pg 147



Autumn Leaves
pg 148



Morning Dew
pg 149



Danube
pg 150



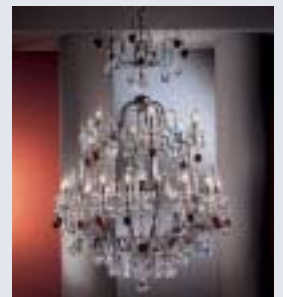
Aurora
pg 151-152



Palatial
pg 153



Brussels
pg 154



Garden of Versailles
pg 155-160



Beaded Leaf
pg 161-162



Gabrielle
pg 163-164



Petite Fleur
pg 165-166



Mediterranean
pg 167



Weatherford Rope
pg 169-172

TABLE OF CONTENTS

CLASSIC

Collections



La Paloma
pg 173-174



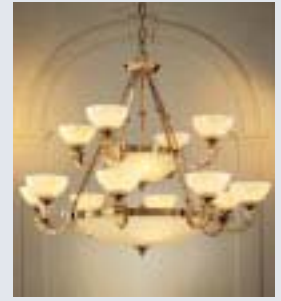
Rialto Contemporary
pg 175-178



Rialto Traditional
pg 179-182



Palermo
pg 183



Mallorca Chandeliers
pg 185-190



Mallorca Bowl Pendants
pg 187-188



Alhambra Chandeliers
pg 191-196



Alhambra Bowl Pendants
pg 195-196



Monica
pg 197-198



Marie Antoinette
pg 199-201



Morena
pg 202



Devon
pg 203-206



Navarra
pg 207-208



Alexandria I
pg 209-211



Alexandria II
pg 212-214



Victorian I
pg 215-217



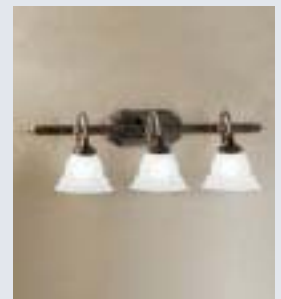
Victorian II
pg 218-220



Yorkshire English Bronze
pg 222-225



Yorkshire Grecian Gold
pg 226-229



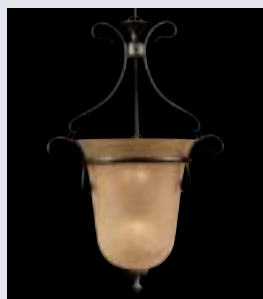
Yorkshire Vanity Bars
pg 229-230



Yorkshire II
pg 231-234



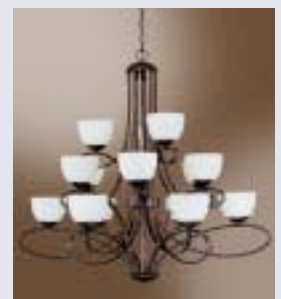
Glendale
pg 235



Bellwether
pg 236



Solo Pendants
pg 237



Odyssey
pg 238-241

TABLE OF CONTENTS

CLASSIC

Collections



Tapestry
pg 242-244



Vintage
pg 245-246



Caprice
pg 247



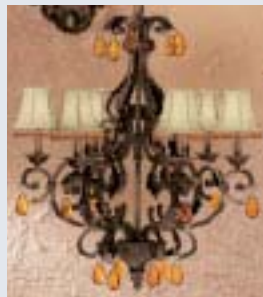
Manila
pg 249-252



Manila II
pg 253-254



Highland
pg 255-256



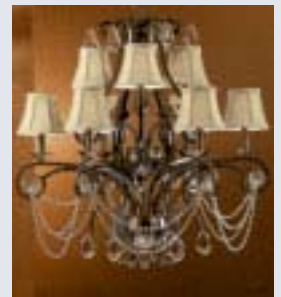
Asheville
pg 257-261



Country Kitchen
pg 262



Alexis
pg 263-265



Tuscany
pg 266



Topaz
pg 267-268



Pineapple
pg 269-270



Elegante
pg 271



Siena
pg 272



Muir Woods
pg 273-274



Westchester
pg 275-280



Paradiso
pg 281



Williamsburgs
pg 282-284



Yorktown
pg 285-286



Hermitage II
pg 287-288



Jamestown
pg 289-290



Hermitage
pg 291-294



Architectural Hermitage
pg 292-294



Vanderbilt
pg 295-296



Dallas Showroom
pg 297

Classic CLASSIC Past & Future

Having been founded in 1972, we just celebrated our thirty third year. For me, it is actually half a lifetime ago! From our humble beginnings in a small warehouse in Melbourne, Florida, our growth has been nothing less than phenomenal.

Besides spending almost half of my life at Classic, I was in the lighting and furniture business since 1963 while working for my father, Alfonso Duran, as sales agents for Spanish lighting and furniture manufacturers. That is why Classic's very first collection happened to be the Barcelona Bronze and Crystal series that is still available today. Coincidentally, at this 2005 Winter Market, we introduced the Madrid series which is a take-off of this Barcelona collection but utilizing crystal columns and bobeches, a variety of crystal trim and added the Roman Bronze finish.

Being a prime source of "classic" lighting styles, we always strived to bring to the marketplace decorative styling from years past but made functional and safe by meeting all the latest UL standards thus the perfect union of old world charm with today's latest technology.

In this catalog we bring you more historically conceived lighting but modernized to meet the more carefree lifestyles and decorating schemes. We have taken the basic designs of traditional lighting and combined them with more contemporary crystal and finishes.

No series emulates this trend better than our Via Veneto collection and its sister series, Via Firenze. Their unprecedented success only proves that the design, crystal trim and finishes were very well accepted by all who have bought these.

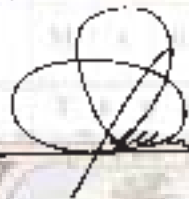
Look over the new variations of our basic crystal groupings such as the Maria Theresa and Versailles, utilizing new crystal cuts and designs, hand-made Murano glass colorful tear drops and fruit accents plus new crystal colors and finishes such as most affordable Italian Rock crystal, hand-decorated Antique Italian, tortoise shell, sandstone crystal and much more.

There are completely new collections inspired by today's furnishings, colors and decorating schemes. The repertoire includes the wispy Italian Florentine and Beverly Hills, the Spanish gothic Merlot, historical Parisian, colorful, dainty Brussels, whimsical Danube, contemporary Uptown, Diamante, Solitaire, Crown Jewels and many others.

In addition, what seems like a departure from what we are known for, we have what sculptured works of art in bronze branches, Murano glass leaves and alabaster bowls in Autumn Leaves, Harvest Moon and Morning Dew groupings.

Our family-owned and operated business will continue to offer you, our faithful clients, the best quality and value for the price backed by our unconditional commitment of good service. This is our promise.

Joe Duran, CEO
Classic Lighting Corporation



Crystal Classic Chandeliers

The word **Classic** has almost become synonymous with **Crystal**. When one thinks Crystal one tends to think of Classic. This is not unusual since Classic began by importing and marketing crystal chandeliers (our Barcelona series of bronze and crystal).

Today Classic is proud to be considered a major source for crystal lighting. This was not accomplished by accident but with direction, research and the ever-constant search for innovative traditional, historical, period and contemporary designs. Always fresh. Always of good taste. Nothing too gaudy or ostentatious. Always true to original design when reproducing period chandeliers.

Classic prides itself in being very knowledgeable in the realm of crystal. It takes knowledge, resource and versatility to be able to offer this mix of crystal chandeliers. The world is our marketplace. Our chandelier frames and crystal trim come from all over the world. Old world craftsmen, primarily from Spain and Italy, fashion these chandeliers of crystal, steel, or solid brass. Classic almost exclusively uses only solid brass to form the chandelier frames. It has been proven that brass lasts forever, does not rust and always maintains a good shine. To further protect and enhance the look, the brass is then 24k goldplated or chrome plated. The result is a chandelier frame that years later will look as good as the day you purchased it.

Classic feels a crystal chandelier is an investment and plays a very important part in decorating the home. It only follows that the frame that holds the crystal trim is equally as beautiful and durable. Following the decorator trends many new finishes are offered with crystal.

Classic offers not only a large assortment of crystal shapes, cuts and sizes but also varied crystal qualities to fit everyone's budget. Classic offers six separate crystal grades:

Swarovski Strass® **Matchless crystal quality**

Strass, a full lead crystal with over 30% lead oxide content, produces unsurpassed brilliance. The cutting exactitude of each facet and optical purity reflect light into a full spectrum of shimmering rainbow colors. An invisible coating called "Brilliant" makes it easy to clean since dust will not adhere, and water leaves residue on the surface.

Swarovski Crystal **Swarovski technology at a more affordable price**

Manufactured by Swarovski with their technological know-how in producing Strass, they now offer Spectra® at a much more inexpensive level. Precision machined to perfection makes this quality bearing the Swarovski name difficult to turn down. All chandeliers with this grade come with the Swarovski Crystal tag.

Crystalique-Plus™

Best Non-Swarovski made lead crystal available

For affordability but without sacrificing quality, Classic uses a mix of highest quality non-Swarovski crystal, with and without lead oxide content, which has fire, color and high degree of brilliance and refraction of light. The crystal is carefully hand cut and then polished one facet at a time. The octagon jewels, too small to hand cut properly, are machine cut for precision.

Crystalique™

Hand cut and polished crystal

Sympathetic to the needs of the consumer, Classic felt the need and responsibility to find good quality crystal prisms and pendants that were very affordable. Our Crystalique crystal is individually hand cut and polished on wooden wheels. The ultimate result is sharp, clean facets that refract light in almost the same way the more expensive crystal does but at a fraction of the cost. This crystal has no lead content but uses only the best raw material to produce this quality. This comprises our prisms and pendants (almonds, pear-shapes, spears and many other shapes). Many new shapes have been recently introduced such as the oyster, kite, tear drop and others. Also myriad of colors now dress our crystal chandeliers.

Not satisfied with the quality of the machine-cut octagons for our Crystalique grade, Classic now uses only octagons with a minimum of 30% lead content (Crystalique-Plus quality) to combine with our Crystalique prisms and pendants. Therefore all Crystalique crystal has Crystalique-Plus lead crystal octagons.

Czech Crystal

From Bohemia (Czech Republic) we obtain our best quality Czech crystal. It is used primarily on our Traditional Versailles Series. It has a small percentage of lead and is meticulously hand cut and polished by Bohemian craftsmen who have perfected the art of crystal cutting. It has extremely pure color and brilliance and is available in many unique shapes and sizes.

Italian Crystal

Crystal produced for economy from pressed molds and machine-polished to achieve acceptable luster and sparkle. Colored crystal has now become a trend so we at Classic have added numerous shapes in various colors and textures – such as Italian rock amber and clear crystal, Hand antiqued crystal French Pendants, and more.

With the diverse selection of crystal grades, the quality of Classic chandeliers need not be compromised for affordability. Almost all collections offer our different selections of quality categories. The ultimate choice is the consumers', based on what their budget can afford.

CLASSIC *Versailles*



The Chateau D’Versailles, located a short distance from Paris, was the country home of the French kings and subsequently transformed into a Palace by Louis XIV known as the Sun King. It was lavishly decorated with magnificent Baroque crystal chandeliers and personified the opulence and grandeur of the era.

Original Versailles chandeliers and wall sconces are very much a part of the history of crystal chandeliers...and very much a part of today’s most decorative lighting.



True to these Versailles origins, the cast solid brass Classic Versailles collection is fashioned by generations of Italian artisans, reproduce the detail of these originals using only the finest solid brass frames with cast arms, scrolls, bobeches and candle cups then adorned with sharply faceted hand-cut and polished Czech crystal spikes on the scrolls and arms and the unique full cut hollow center spike internally lit from within the center of most of the chandeliers.



Today’s homeowners can express their own individuality and taste by choosing the type of crystal that best suits their decorating personality.

■ *All numbers displaying this symbol have the center spike light feature.*

To achieve this end, Classic Versailles is offered in two distinctive styles of crystal trim.

1. The Traditional Versailles series:
In keeping with the original designs, this version is trimmed with highest quality hand-cut and polished Czech lead crystal French pendalogs of assorted authentic shapes and varied sizes. (All numbers beginning with “8” - 8000-series)

2. The Transitional Versailles series:
This uses the more contemporary, popular almond-shaped crystal in either our own Crystalique™ hand-cut and polished crystal or Swarovski Strass. (All numbers beginning with “9” - 9000-series.)

Classic Versailles offers one of the most comprehensive and varied crystal chandeliers and wall sconces of the Louis XIV era – everything from a four light foyer chandelier to a grandiose large entryway or commercial 30 light chandelier.

Our European craftsmen reproduce the true flavor of Versailles finish either in lustrous French Gold (FG) or in burnished antique bronze (AB). Always suffix the finish codes when ordering.

Designs, sizes, light configurations or finishes are not limited to those shown in this catalog. Given a good lead-time, we can special order for your special specifications or requirements.



VERSAILLES

Solid cast bronze frame trimmed with either traditional Czech lead crystal or transitional almond shaped prisms, Crystalique™, Swarovski or Strass®. The entire series is offered only in an Antique Bronze finish (AB).

8025 AB - 12+6+6+(1) Lights
39"W x 42"H

9025 AB - 12+6+6+(1) Lights
39"W x 42"H
Transitional version

Not shown

VERSAILLES

RESIDENTIAL COMMERCIAL

Heavy cast bronze frame trimmed with either traditional Czech lead crystal or transitional almond shaped prisms, Crystalique™, Swarovski, or Strass®. Offered in an Antique Bronze finish (AB).



☐ **9030 AB** - 30 Lights
58"W x 71"H

☐ **8030 AB** - 30 Lights
58"W x 71"H
Traditional version

☐ Not shown

TRANSITIONAL VERSAILLES

Suffix crystal code when ordering:

C Crystalique™
SC Swarovski
S Strass®




9019 AB - 12+6+(1) Lights
36"W x 56"H

8019 AB - 12+6+(1) Lights
36"W x 56"H
Traditional version


Not shown

TRADITIONAL VERSAILLES



 **8007 AB** - 6+(1) Lights
23"W x 33"H



 **8009 AB** - 8+(1) Lights
27"W x 37"H



8001 AB - 3 Lights
12"W x 17"H x 8"D



8000 AB - 2 Lights
12"W x 17"H x 5"D

Chandeliers and wall sconces scaled for smaller foyers, power rooms, dining rooms, dens and bedrooms.

All fixtures are supplied with traditional white candle covers plus upgraded matching metal candle covers.



8004 AB - 4 Lights
20"W x 24"H



8002 AB - 3+2 Lights
13"W x 20"H x 8"D



8003 AB - 4+3+2 Lights
20"W x 29"H x 10"D




8013 AB - 8+4+(1) Lights
27"W x 39"H

Except for the 8004, all chandeliers have the unique center spike light.



TRANSITIONAL VERSAILLES



 **9007 AB** - 6+(1) Lights
23"W x 33"H



9001 AB - 3 Lights
12"W x 17"H x 8"D



9000 AB - 2 Lights
12"W x 17"H x 5"D



 **9009 AB** - 8+(1) Lights
27"W x 37"H



These chandeliers and wall sconces are the same frames as used in the previous pages but trimmed with the almond prisms in 3 crystal qualities.

Suffix crystal code when ordering:

C Crystalique™
SC Swarovski
S Strass®

All fixtures are supplied with traditional white candle covers plus upgraded matching metal candle covers.



9004 AB - 4 Lights
20"W x 24"H



9002 AB - 3+2 Lights
13"W x 20"H x 8"D



9013 AB - 8+4+(1) Lights
27"W x 39"H



9003 AB - 4+3+2 Lights
20"W x 29"H x 10"D



Bohemia

CLASSIC All-Crystal

The elegance and purity of all-glass chandeliers have been a part of a sumptuous way of life for centuries. The art of glass blowing originating in Bohemia, which is now the Czech Republic, was passed down through generations, many of whom, due to the political unrest, migrated into the Venice region of Italy and continue to make these exquisite classic chandeliers.

The Bohemia series chandeliers utilize chrome plated metal parts to give the illusion of an all-glass fixture with crystal suspended in thin air. Although offered with chrome metal fittings as standard we are offering this series also in goldplated metal parts for those who wish to achieve a warmer look on special order. With sufficient lead-time, we can custom furnish gold-plated versions on special order.

These are richly trimmed with crystal draping and pendants, creating a shimmering cascading effect that would enhance any entryway or formal dining room.

Crystal Trim: Classic Bohemia chandeliers and matching wall sconces showcase an elegant display of French pendants, almond-cut prisms and jewel-like Strass or Crystalique-Plus lead oxide-based crystal octagons. For matchless quality, Strass is the first choice. For more affordability without sacrificing style or quality, our Crystalique crystal is the alternate choice. Crystalique pendants are hand-cut and polished and the octagons are precision machine-cut of exactitude and sharpness.

This collection in various sizes and light configurations was expressly designed and engineered to meet the needs for residential high ceilings, two-story entryways, oversized atriums or commercial applications such as churches, hotels, restaurants, banks, casinos and just about anywhere sophisticated lighting is needed.

Not limited to large areas, smaller-scaled chandelier sizes and wall sconces are offered to fit any space in the home from dining rooms, bedrooms, powder rooms to accent lighting one's den or sitting room.

BOHEMIA



8265 CH - 20+10+10 Lights
54"W x 72"H

8266 CH - 20+10+10 Lights
60"W x 72"H

Gold version available by Special Order

Not shown

Suffix crystal code when ordering:

C Crystalique™
SC Swarovski
S Strass®

Suffix finish code with ordering:

CH Chrome
G 24K Gold



BOHEMIA



8262 CH - 10+5 Lights
32"W x 42"H

8263 CH - 12+6 Lights
36"W x 51"H

With all nickel plated metal parts and matching nickel crystal connectors, these chandeliers give the illusion of being held together only by crystal without a metal frame.

Suffix finish code with ordering:
CH Chrome
G 24K Gold



8260 CH - 5 Lights
20"W x 18"H x 13"D



8261 CH - 8 Lights
28"W x 32"H



8264 CH - 20+10 Lights
48"W x 60"H
Gold version available
by Special Order

The chandeliers and matching wall sconces for this Bohemia series are lavishly and very generously trimmed with large crystal pendulogues and shimmering octagon jewel chains in either finest quality Strass or our own affordable but excellent quality Crystalique crystal.

Suffix crystal code when ordering:
C Crystalique™
SC Swarovski
S Strass®



BOHEMIA

Suffix crystal code when ordering:

C Crystalique™
 SC Swarovski
 S Strass®

Suffix finish code with ordering:

CH Chrome
 G 24K Gold

8260 CH - 5 Lights

20"W x 18"H x 13"D

Shown with optional glass shades



8269 CH - 3 Lights
 15"W x 14"H x 10"D



8276 CH - 12 Lights
 32"W x 26"H



8272 CH - 2 Lights
 13"W x 14"H x 9"D



8270 CH - 12+6 Lights
 32"W x 65"H

8271 CH - 12+6 Lights
 38"W x 65"H

8274 CH - 12+6 Lights
 32"W x 51"H
 Gold version available
 by Special Order

Not shown



GS-8200

Etched glass shades optional
 (fits all Bohemia numbers)

Scaled for narrower but high ceilings and entryways

MONTICELLO

STANDARD

UPGRADE



Italian crystal

8201 GP - 12+6+3 Lights Gold Plated
36"W x 55"H

8231 CH - 12+6+3 Lights Chrome

Not shown

8251 CH - 12+6+3 Lights Chrome
36"W x 55"H

8241 GP - 12+6+3 Lights Gold Plated

Suffix crystal code when ordering
upgrade crystal:

C Crystalique™
SC Swarovski Crystal
S Strass®

All-glass chandeliers supplied with either gold plated or chrome metal parts.

MONTICELLO

STANDARD



8209 GP - 8+4 Lights Gold Plated
27"W x 34"H

8239 CH - 8+4 Lights Chrome



8205 GP - 5 Lights Gold Plated
22"W x 16"H

8235 CH - 5 Lights Chrome



8232 CH - 2 Lights Chrome
12"W x 7"H x 7"D

8202 GP - 2 Gold Plated



8236 CH - 6 Lights Chrome
22"W x 22"H

8206 GP - 6 Lights Gold Plated



8208 GP - 8 Lights Gold Plated
27"W x 22"H

8238 CH - 8 Lights Chrome



8234 CH - 4 Lights Chrome
11"W x 15"H

8204 GP - 4 Lights Gold Plated

All-glass chandeliers with either gold plated or chrome metal parts trimmed with Italian crystal designed to be very inexpensive to fit everyone's budget.

Not shown

8256 CH
6 Lights Chrome
22"W x 28"H
 8246 GP
6 Lights Gold Plated



8242 GP
2 Lights Gold Plated
12"W x 7"H x 7"D
 8252 CH
2 Lights Chrome



8259 CH
8+4 Lights Chrome
27"W x 42"H
 8249 GP
8+4 Lights Gold Plated



8245 GP
5 Lights Gold Plated
22"W x 21"H
 8255 CH
5 Lights Chrome



8244 GP - 4 Lights Gold Plated
11"W x 15"H
 8254 CH - 4 Lights Chrome
8248 GP - 8 Lights Gold Plated
27"W x 30"H
 8258 CH - 8 Lights Chrome



All-glass chandeliers generously adorned with a combination of French Pendants, almond cut prisms and elongated chains make this series very desirable yet most affordable.

Suffix crystal code when ordering:
C Crystalique™
SC Swarovski Crystal
S Strass®

PRAGUE



8282 CH C - 2 Lights
14"W x 16"H x 9"D

Only the pendants are furnished in either chrome (CH) or gold plated (G) finishes. Suffix finish code when ordering. All chandeliers and sconces are supplied only in chrome.



8285 CH C
5 Lights
21"W x 20"H x 15"D



8221 G - 1 Light
12"W x 9"H



8220 CH - 1 Light
9"W x 8"H

Suffix crystal code when ordering:
CP Crystalique-Plus™
SC Swarovski Crystal
S Strass®



8224 CH - 1 Light
12"W x 22"H





8288 CH C - 8 Lights
27"W x 39"H



8283 CH C - 12+6 Lights
39"W x 63"H

These traditional all crystal Bohemia chandeliers, pendants and wall sconces have been updated with an eclectic mix of crystal shapes to add a contemporary flare to these designs. The frames are of finest quality lead crystal. Those with discriminating taste will surely notice the difference.

Suffix crystal code when ordering:

- C Crystalique™
- SC Swarovski Crystal
- S Strass®

Note that SC & S options will convert oyster shaped crystal to standard almond prisms & kite shapes will change to french Pandalogs.

PRAGUE



8286 CH C - 6 Lights
26"W x 34"H



8284 CH C - 30 Lights
42"W x 69"H

Note that SC & S options will convert oyster shaped crystal to standard almond prisms & kite shapes will change to french Pendants.



Prague is offered in sizes and lights ranging from a 26"W x 34"H six candle dining light to a magnificent 56"W x 88"H forty candle grand entryway chandelier. Series also comes with accompanying pendants and wall sconces.



8287 CH C
5 Light
26"W x 27"H



Suffix crystal code when ordering:
C Crystalique™
SC Swarovski Crystal
S Strass®

8289 CH C - 40 Lights
56"W x 88"H

Maria Theresa CLASSIC

Maria Theresa was a very famous Austrian Empress who reigned during the mid-seventeen hundreds when the Baroque designs were very much in vogue. The type of chandelier with its unique curving lines and lavish crystal ornamentation made its first appearance during her regime. Since then this type of chandelier has been known as a "Maria Theresa". It is widely accepted throughout the world as a traditional crystal chandelier design and is an integral part of crystal chandelier history.

Maria Theresa chandeliers and wall sconces appear to be made entirely of glass, but actually have a sturdy steel frame. Wrapping hand-blown Czech glass panels, bent to size while still soft, around a steel frame, creates this illusion. Then it is lavishly trimmed with shimmering crystal draping and pendants.

The steel frame is painted with a gold patina known as Old World Gold (OWG), the same finish used on the original versions. For a more contemporary and an all-crystal look, we have the Silver Maria Theresa series. was added. These frames are chrome-plated for optimum brilliance and exceptional finish durability. Others only plate it in nickel which is far inferior. These silver Maria Theresa chandeliers and sconces are available in Old World Gold. The rest of the items shown in the OWG finish in this section are offered in our chrome plated finish – some on special order only.

By using a steel frame, a Maria Theresa chandelier can be made in just about any size and shape and, more importantly, can support the heavy crystal trim that adorns it.

Since electricity was not invented at the time of its inception, wax candles were used. Subsequently, it was fitted with electrical wire, sockets and bulbs. An original Maria Theresa still graces the Schonbrunn Palace in Austria.

The Classic Maria Theresa chandelier framework, fashioned by Italian artisans who

have brought down the tradition from their Austrian and Czech ancestors, is then trimmed with a variety of different shapes of pendants and chains of octagons. The bare frame is merely the vehicle on which the crystal drape and pendants are placed to recreate the many diverse designs of chandeliers from the simplest to the most intricate.

Classic has the most extensive variety of Maria Theresa chandeliers and prides itself in offering just about every size, design, light configuration and crystal design and price available for residential or commercial applications. And if you still cannot find what you are looking for in this catalog, send us your specifications and we will custom design it to your exact requirements.

For versatility of look and price, Classic offers in same frame with variations of trim. Most of the chandelier frames are trimmed two ways – a standard version and much fuller version. We call the fuller version our "Reflections" series featuring imposing elongated hanging chains punctuated with large prisms and French pendants and generous amounts of crystal draping to fill those voluminous spaces in grand fashion.

Throughout the Maria Theresa group, "Reflections" identifies the fuller versions. The majority has the standard version on the left and the fuller Reflections version on the right.

For most of this series three grades of crystal are offered - Strass, Swarovski or Crystalique.

SILVER MARIA THERESA

This chandelier was designed to fill a large entryway, dining room or atrium with high ceilings. It is also used in commercial applications.

8137 CH - 30+1 Lights
45"W x 55"H

To enhance the illusion of an "all-glass chandelier" Classic just developed an entire series of "Silver Maria Theresa". This is accomplished by chrome plating the metal frame. Unlike the competition that uses nickel plating, Classic opted for chrome over nickel because chrome has a mirror-like all-glass appearance and withstands atmospheric conditions that tend to tarnish or darken nickel with time. Classic's Silver Maria Theresa chandelier will look as good in later years as it looked when it was purchased.

Suffix finish code when ordering:

CH	Chrome
OWG	Olde World Gold

All silver Maria Theresa items can be ordered in Olde World Gold (OWG) finish. The crystal is offered in three grades of quality - Crystalique™ (standard), Swarovski and Strass® (upgrades). Suffix also the crystal code when ordering.

Scaled down for
that powder room,
hall or smaller
dining room.



8134 CH - 4 Lights
16"W x 17"H



8132 CH - 12 Lights
25"W x 24"H



8105 CH - 5 Lights
13"W x 14"H x 9.5"D



8103 CH - 3 Lights
12"W x 15"H x 8.5"D



8102 CH - 2 Lights
10"W x 13"H x 8.5"D



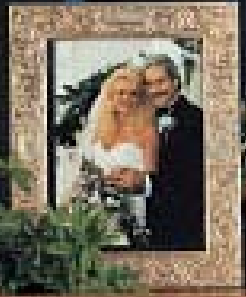
8101 CH - 1 Light
5"W x 12"H x 9"D

Suffix crystal code when ordering:
C Crystalique™
SC Swarovski
S Strass®

8133 CH - 12+1 Lights
28"W x 29"H



8136 CH - 15+1 Lights
28"W x 29"H



Suffix finish code when ordering:
CH Chrome
OWG Olde World Gold

These chandeliers are scaled to fit the average size dining rooms, vestibules, libraries or dens.



Suffix finish code when ordering:
CH Chrome
OWG Olde World Gold

8131 CH - 24+1 Lights
36"W x 55"H
Gold version available by
Special Order

When chandelier height is needed
to fill that volume ceiling,
this chandelier is made to order.



8138 CH - 18+1 Lights
36"W x 38"H

Suffix crystal code when ordering:

- C Crystalique™
- SC Swarovski
- S Strass®

Foyers, dining rooms, living rooms with vaulted ceilings.

GOLD MARIA THERESA



8118 OWG - 18+1 Lights
36"W x 28"H

The perfect marriage between old and new traditional **Maria Theresa** chandeliers and wall sconces trimmed with today's highest quality Strass, Swarovski or more economical hand cut and polished Crystalique crystal produces a real look of elegance that will last for years to come.

All Olde World Gold items illustrated can be ordered in Chrome (CH) finish.

Suffix finish code when ordering:

CH Chrome
OWG Olde World Gold



Suffix crystal code when ordering:

C Crystalique™
SC Swarovski
S Strass®

8128 OWG - 18+1 Lights
36"W x 45"H

To accommodate today's high ceiling dining rooms, oversized atriums and two-story entryways, utilizing the beautiful frames illustrated in these pages, Classic created this Maria Theresa **Reflections** series (through page 43) featuring imposing elongated hanging chains punctuated with large prisms and French pendulogues and generous amounts of crystal draping to fill those voluminous spaces in grand fashion.

All wall bracket backplates are oval as shown on page 28, not intended as shown here.



8116 OWG - 15+1 Lights
27"W x 22"H



8102 OWG - 2 Lights
11"W x 14"H x 8"D



8110 OWG - 10 Lights
24"W x 18"H



8105 OWG - 5 Lights
13"W x 14"H x 9"D

Suffix finish code when ordering:
CH Chrome
OWG Olde World Gold

Suffix crystal code when ordering:
C Crystalique™
SC Swarovski
S Strass®



8115 OWG - 5 Lights
14"W x 24"H



8106 OWG - 6 Lights
22"W x 22"H

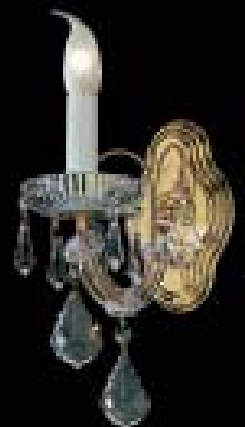


8113 OWG - 12+1 Lights
27"W x 22"H

8103 OWG - 3 Lights
12"W x 14"H x 8"D



8101 OWG - 1 Light
6"W x 11"H x 9"D



REFLECTIONS

All wall bracket backplates are oval as shown on page 28, not intended as shown here.



8129 OWG - 3 Lights
11"W x 15"H x 8"D



8120 OWG - 10 Lights
24"W x 25"H



8122 OWG - 2 Lights
9"W x 10"H x 6"D



8124 OWG - 12+1 Lights
27"W x 32"H



8121 OWG - 6 Lights
22"W x 26"H



8127 OWG
1 Light
6"W x 11"H x 9"D

Maria Theresa chandeliers with elongated chains, large pendants and matching wall brackets. If you want to shorten the height of the chandeliers, merely remove octagons from the bottom chains.

Suffix finish code when ordering:
CH Chrome
OWG Olde World Gold



8125 OWG - 5 Lights
13"W x 15"H x 9"D



8126 OWG - 15+1 Lights
28"W x 33"H



8123 OWG - 12+1 Lights
27"W x 32"H

Suffix crystal code when ordering:

- C Crystalique™
- SC Swarovski
- S Strass®





Suffix crystal code when ordering:
C Crystalique™
SC Swarovski
S Strass®

8159 OWG - 24+1 Lights
40"W x 36"H

Larger Maria Theresa fixtures on the following pages may not be available in Swarovski Crystal.



Suffix finish code when ordering:
CH Chrome
OWG Olde World Gold

8179 OWG - 24+1 Lights
40"W x 50"H



8160 OWG - 30+1 Lights
43"W x 33"H

Suffix crystal code when ordering:
C Crystalique™
SC Swarovski
S Strass®



8180 OWG - 30+1 Lights
43"W x 44"H

Suffix finish code when ordering:
CH - Chrome
OWG - Olde World Gold



8163 OWG - 30+1 Lights
45"W x 47"H

Suffix crystal code when ordering:
C Crystalique™
SC Swarovski
S Strass®



8183 OWG - 30+1 Lights
45"W x 66"H

Suffix finish code when ordering:
CH Chrome
OWG Olde World Gold



8166 OWG - 36+1 Lights
64"W x 60"H
Chrome version available by
Special Order

Suffix crystal code when ordering:
C Crystalique™
SC Swarovski
S Strass®



Suffix finish code when ordering:
CH Chrome
OWG Olde World Gold

8186 OWG - 36+1 Lights
64"W x 80"H
Chrome version available by
Special Order



8167 OWG - 77+7 Lights
60"W x 68"H
Chrome version available by
Special Order



Suffix crystal code when ordering:
C Crystalique™
SC Swarovski
S Strass®



Suffix finish code when ordering:
CH Chrome
OWG Olde World Gold

8187 OWG - 77+7 Lights
60"W x 88"H

Chrome version available by
Special Order



8168 OWG - 48+1 Lights
74"W x 50"H

Chrome version available by
Special Order

Suffix crystal code when ordering:
C Crystalique™
SC Swarovski
S Strass®



Suffix finish code when ordering:

CH Chrome

OWG Olde World Gold

8188 - 48+1 Lights
74"W x 74"H

Chrome version available by
Special Order



Suffix crystal code when ordering:

- C Crystalique™
- SC Swarovski
- S Strass®



8169 OWG - 64+8 Lights
84"W x 78"H

Chrome version available by
Special Order

Suffix finish code when ordering:
CH Chrome
OWG Olde World Gold



Suffix crystal code when ordering:

C Crystalique™
SC Swarovski
S Strass®

Suffix finish code when ordering:

CH Chrome
OWG Olde World Gold

8149 - 64+8 Lights
84"W x 78"H

Chrome version available by
Special Order

Via Veneto

CLASSIC

Nothing equals a stroll down one of the most well known streets in the world – the Via Veneto in Rome. This series depicts an era of prosperity and prestigious living. Hand-etched 24% lead crystal columns, founts and bobeches are interspersed among the heavy chased Spanish castings, and then generously adorned with unique crystal shapes – oysters, kites, almonds – that recreate the style of Italian Renaissance period.

To afford everyone the flexibility of matching decorator color trends, this series is offered in unprecedented five different finishes some of which painstakingly created by Classic expressly for this collection. Aside from the basic 24k gold, there's Champagne Pearl – a combination of Silver and Gold in a satin tone, Roman Bronze – rich natural oxidized bronzing with polished highlights to bring out the detail in the relief work, Silverstone – a subtle satin nickel, Millennium Silver – silver oxide with rich pewter detail and Ebony Pearl – like a beautiful black pearl.





57002 RB - 2 Lights
13"W x 16"H x 8"D



57012 RB - 6+6 Lights
25"W x 40"H



57004 RB - 4 Lights
17"W x 25"H



Suffix finish code when ordering:
CHP Champagne Pearl
EP Ebony Pearl
G 24k Gold
MS Millennium Silver
RB Roman Bronze
SS Silverstone

ROMAN
BRONZE (RB)



57030 RB - 12+6+6+6 Lights
46"W x 64"H



57012 MS - 6+6 Lights
25"W x 40"H



57006 MS - 6 Lights
25"W x 33"H



MILLENNIUM
SILVER (MS)



57030 MS - 12+6+6+6 Lights
46"W x 64"H

24 k GOLD (G)



57002 G - 2 Lights
13"W x 16"H x 8"D



57003 CHP - 3 Lights
13"W x 16"H x 9"D



57004 G - 4 Lights
17"W x 25"H

57013 CHP - 6+6 Lights
31"W x 37"H

CHAMPAGNE
PEARL (CHP)



57025 CHP - 16+8 Lights
46"W x 59"H



57003 SS - 3 Lights
13"W x 16"H x 8"D



57006 SS - 6 Lights
25"W x 33"H



57013 SS - 6+6 Lights
31"W x 37"H

SILVERSTONE (SS)

57024 SS - 12+6+6 Lights
35"W x 62"H



VIA VENETO



57024 EP
12+6+6 Lights
35"W x 62"H

This series is the aristocracy of lighting. It is featured in our catalog 4500 pages 47-55. In keeping with the demands for the latest in decorative finishes, this Via Veneto is now offered with our newest finish, Ebony Pearl (EP). Like the rare black pearls found under the sea, this finish accentuates the lavish Crystalique™ crystal trim. Always specify the finish code when ordering.



57030 EP - 12+6+6+6 Lights
46"W x 64"H

These chandeliers are also used
in Commercial applications.



57002 EP - 2 Lights
13"W x 16"H x 8"D



57006 EP - 6 Lights
25"W x 33"H



57013 EP - 6+6 Lights
31"W x 37"H

Suffix finish code when ordering:

CHP	Champagne Pearl
EP	Ebony Pearl
G	24k Gold
MS	Millennium Silver
RB	Roman Bronze
SS	Silverstone



Via Firenze

CLASSIC

The historical beauty of the city of Firenze (Florence) is timeless like the intrinsic beauty of old world lighting designs. Taking a concept of lighting that graced the homes of royalty in the eighteenth century and transforming it into a more contemporary look is what this series is all about. Like its sister collection, our Via Veneto, this series combines heavy chased Spanish brass castings with 25% lead crystal columns, founts and bobeches; then adorned with a myriad of crystal shapes and sizes. Available in three crystal grades: Crystalique, Swarovski Crystal, or Strass.

In our search for the right finishes to decorate the sumptuous interiors in which these chandeliers will eventually be used, we have provided two new finishes - a Silver Plate and a natural Bronze with a slight Black umber to bring out the detail in the relief work. The Silver Plated finish is an extremely elegant finish and blends in with the lead crystal columns and crystal pendants. The bronze depicts an old world look. In addition to these two finishes, the series is also offered in our extremely popular Millennium Silver and Roman Bronze finishes.



VIA FIRENZE



57106 SP - 6 Lights
26"W x 27"H



57102 SP - 2 Lights
19"W x 14"H x 9"D



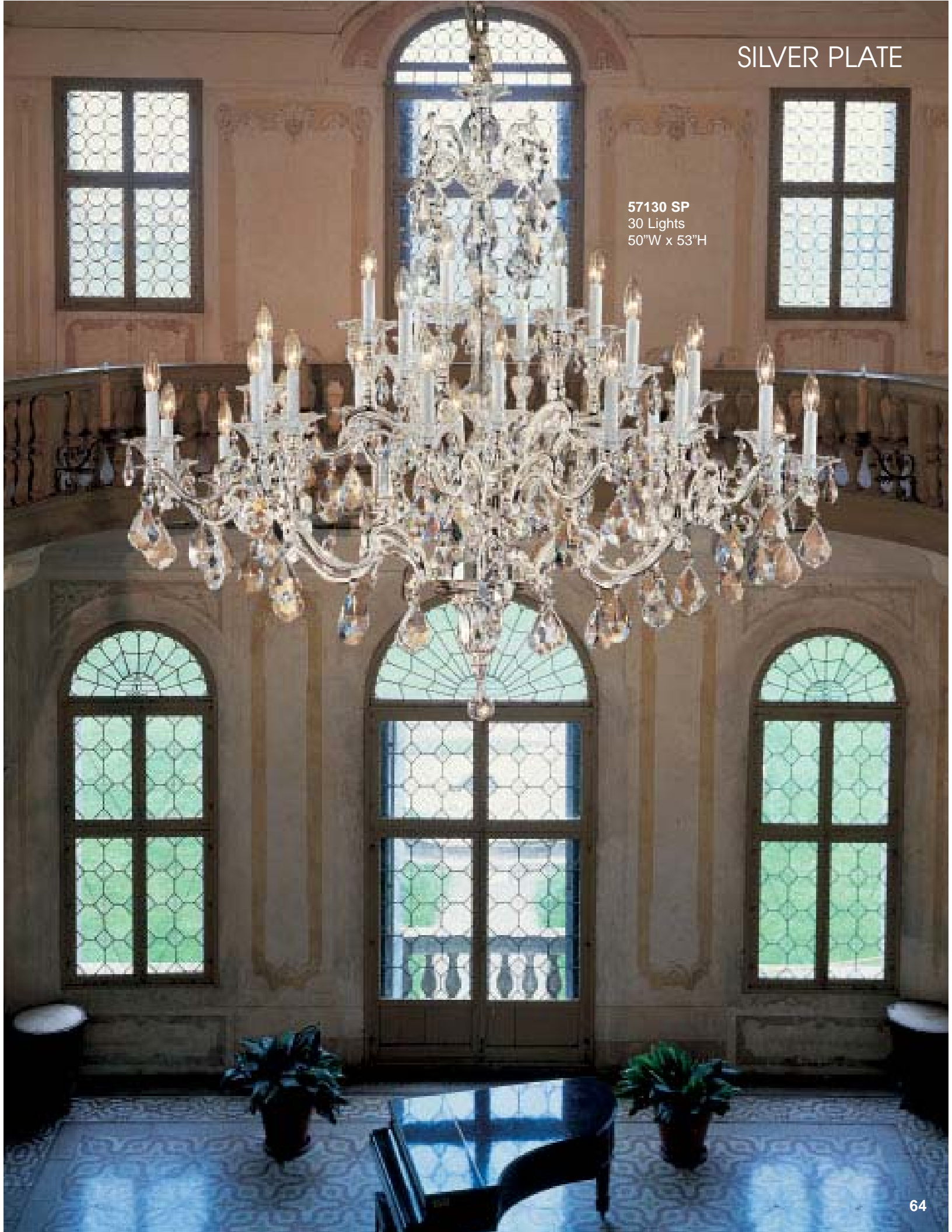
57112 SP - 6+6 Lights
31"W x 38"H

Suffix finish code when ordering:
BBK Bronze with Black patina
MS Millennium Silver
RB Roman Bronze
SP Silver Plate

Suffix crystal code when ordering:
C Crystalique™
IRA Italian Rock Amber™
IRC Italian Rock Clear™
SC Swarovski Crystal
S Strass®

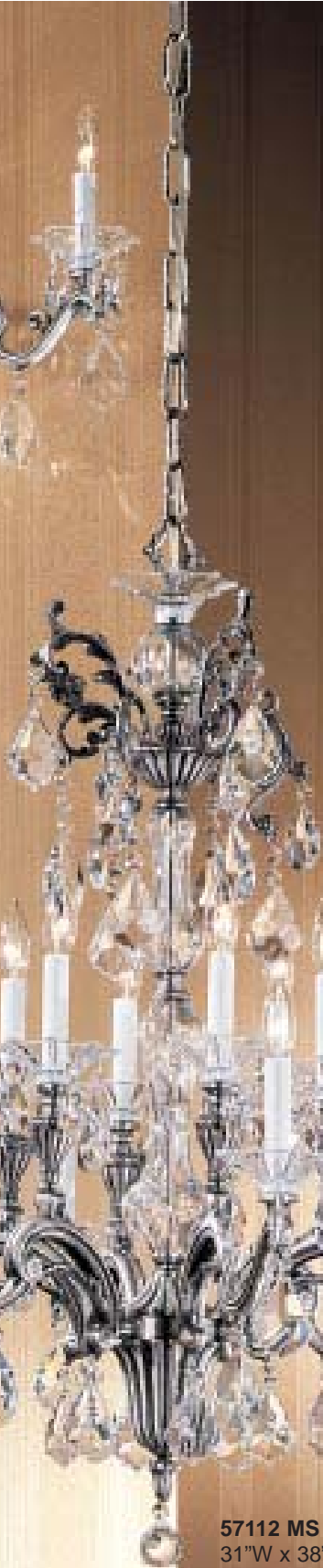
SILVER PLATE

57130 SP
30 Lights
50"W x 53"H





57102 MS - 2 Lights
19"W x 14"H x 9"D



57106 MS - 6 Lights
26"W x 27"H



57112 MS - 6+6 Lights
31"W x 38"H

Suffix finish code when ordering:

BBK Bronze with Brown Patina
MS Millennium Silver
RB Roman Bronze
SP Silver Plate

Suffix crystal code when ordering:

C Crystalique™
IRA Italian Rock Amber™
IRC Italian Rock Clear™
SC Swarovski Crystal
S Strass®



MILLENNIUM SILVER



57104 MS IRC
4 Lights
18"W x 24"H



57116 MS - 8+8 Lights
35"W x 38"H





57102 RB - 2 Lights
19"W x 14"H x 9"D



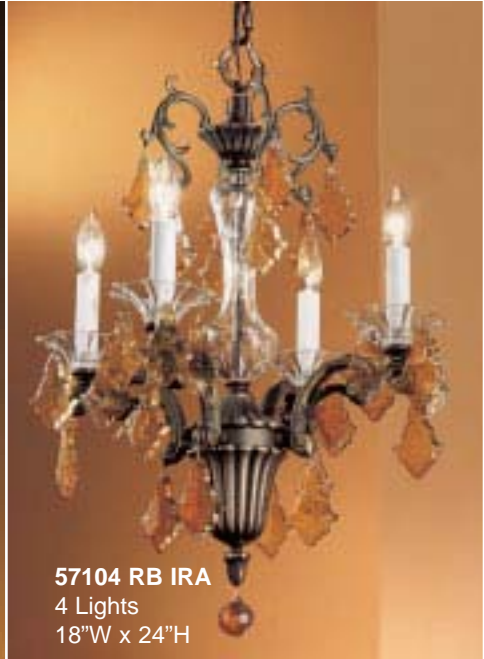
57106 RB - 6 Lights
26"W x 27"H



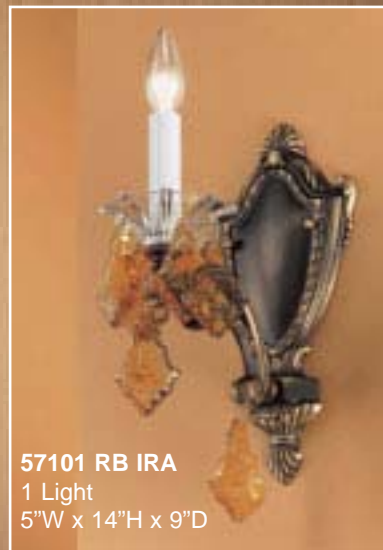
57112 RB - 6+6 Lights
31"W x 38"H



ROMAN BRONZE



57104 RB IRA
4 Lights
18"W x 24"H



57101 RB IRA
1 Light
5"W x 14"H x 9"D



57130 RB - 12+6+6 Lights
50"W x 53"H

Suffix finish code when ordering:
BBK Bronze with Brown Patina
MS Millennium Silver
RB Roman Bronze
SP Silver Plate

Suffix crystal code when ordering:
C Crystalique™
IRA Italian Rock Amber™
IRC Italian Rock Clear™
SC Swarovski Crystal
S Strass®



57102 BBK - 2 Lights
19"W x 14"H x 9"D



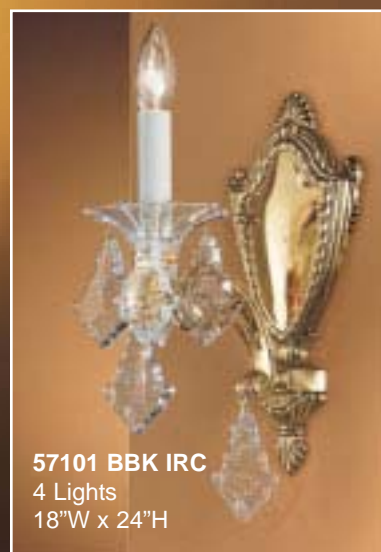
57106 BBK - 6 Lights
26"W x 27"H



57112 BBK - 6+6 Lights
31"W x 38"H

Suffix finish code when ordering:
BBK Bronze with Brown Patina
MS Millennium Silver
RB Roman Bronze
SP Silver Plate

Suffix crystal code when ordering:
C Crystalique™
IRA Italian Rock Amber™
IRC Italian Rock Clear™
SC Swarovski Crystal
S Strass®



57101 BBK IRC
4 Lights
18"W x 24"H

BRONZE WITH
BLACK PATINA

Fine works of art are always placed in beautiful frames, so why not frame your heirloom quality Classic Lighting chandelier with a Classic medallion. Medallion CM0230 – 30" is shown above. See page 63 for the entire Medallion collection.



57116 BBK - 8+8 Lights
35"W x 38"H

MADRID IMPERIAL



5544 OWB C
4 Lights
13"W x 17"H



5540 RB C - 10 Lights
25"W x 28"H



5541 RB C - 1 Light
9"W x 12"H x 6"D



5548 OWB C - 18 Lights
30"W x 35"H



5542 OWB C - 2 Lights
11"W x 4"H x 5"D

Suffix finish code when ordering:

OWB Olde World Bronze
RB Roman Bronze

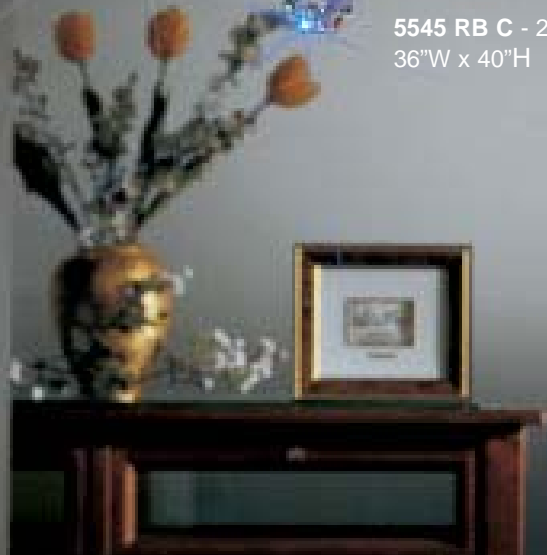
Suffix crystal code when ordering:

CP Crystalique-Plus™
SC Swarovski Crystal
S Strass®



Spanish solid brass cast frames with crystal columns, founts and bobeches and finally very generously trimmed with a myriad of crystal. This upgrade version is also furnished in either the Old World Bronze or Roman Bronze.

5545 RB C - 25 Lights
36"W x 40"H





5534 RB C - 4 Lights
13"W x 15"H



5532 RB C - 2 Lights
11"W x 17"H x 4"D



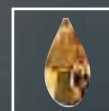
5538 RB C - 18 Lights
30"W x 30"H



5530 OWB C - 10 Lights
25"W x 22"H



5531 OWB C - 1 Light
8"W x 12"H x 6"D



Suffix crystal code when ordering:
C Cyrstalique™
SC Swarovski Crystal
S Strass®
PAM Prisms Amber

MADRID

Cast solid brass Spanish frames are interspersed with crystal columns, founts and bobeches to give us a true classic design to adorn with a variety of crystal options - Crystalique™, Swarovski and Strass® clear crystal plus amber prisms (PAM).

The brass frames come in either the traditional Olde World Bronze (OWB) or darker tones of Roman Bronze with brushed highlights (RB).



5535 OWB C - 25 Lights
36"W x 34"H

PRINCETON



5748 SBB - 48 Lights
58"W x 45"H

Inspired by the elegance and grandeur of yesterday's period lighting this **Princeton** series brings stature to the decorating schemes of today. Heavy Cast Spanish bronze chandeliers finished in either 24k gold or satin matte bronze lightly decorated with a brown umber to bring out the detail of the castings. These are offered with or without crystal trim.



5748 G C - 48 Lights
58"W x 51"H

When ordering, suffix finish code:
G 24k Gold
SBB Satin Bronze with Brown Patina

If crystal trim is desired, suffix the crystal trim code:
C Crystalique™
S Strass®



5736 G - 36 Lights
48"W x 33"H



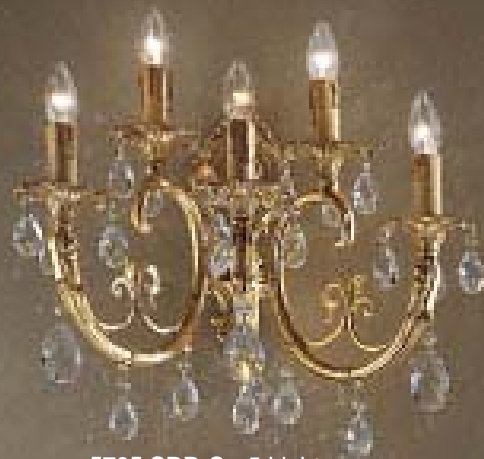
5736 SBB C - 36 Lights
48"W x 38"H

When ordering, suffix finish code:

G 24k Gold
SBB Satin Bronze with Brown Patina

If crystal trim is desired, suffix the crystal trim code:

C Crystalique™
S Strass®



5705 SBB C - 5 Lights
20"W x 16.5"H x 13"D



5702 SBB - 2 Lights
16"W x 11"H x 9"D



5712 SBB - 12 Lights
29"W x 20"H



5706 SBB C - 6 Lights
24"W x 21"H



5718 SBB - 18 Lights
35"W x 46"H

When ordering, suffix finish code:
G 24k Gold
SBB Satin Bronze with Brown Patina

If crystal trim is desired,
suffix the crystal trim code:
C Crystalique™
S Strass®



5705 G - 5 Lights
20"W x 13.5"H x 13"D

5712 G C - 12 Lights
29"W x 25"H



5702 G C - 2 Lights
16"W x 14"H x 9"D

5706 G - 6 Lights
24"W x 18"H




5718 G C - 18 Lights
35"W x 50"H


PRINCETON II



57205 RB C - 5 Lights
25"W x 21"H w/crystal
25"W x 18"H w/o crystal



57202 RB C - 2 Lights
15"W x 16"H x 11"D w/crystal
15"W x 14"H x 11"D w/o crystal



57220 RB C - 10+5+5 Lights
38"W x 40"H w/crystal
38"W x 37"H w/o crystal

Suffix finish code when ordering:
MS Millennium Silver
RB Roman Bronze


Suffix crystal code when ordering:
C Crystalique™
SC Swarovski Crystal
S Strass®

These fixtures are offered with or without crystal trim.


Borrowing designs from the late 17th Century Spanish Renaissance period when chandeliers were made of heavy bronze castings, Classic put together this Princeton II series. These bold sculptured chandeliers are excellent statement pieces for entry foyers, great rooms or formal dining rooms.




57240 RB C - 40 Lights
48"W x 57"H w/crystal
48"W x 54"H w/o crystal



57205 MS C - 5 Lights
25"W x 21"H w/crystal
25"W x 18"H w/o crystal



57202 MS C - 2 Lights
15"W x 16"H x 11"D w/crystal
15"W x 14"H x 11"D w/crystal



57220 MS C - 10+10+5 Lights
38"W x 40"H w/crystal
38"W x 37"H w/o crystal

Suffix finish code when ordering:
MS Millennium Silver
RB Roman Bronze

If ordered with crystal trim:
Suffix crystal code when ordering:
C Crystalique™
SC Swarovski Crystal
S Strass®

MILLENNIUM SILVER

These fixtures are offered with or without crystal trim.

These large chandeliers are ideal for Commercial applications.



57250 MS C - 50 Lights
67"W x 69"H w/crystal
67"W x 66"H w/o crystal

BARCELONA



5221 OWB - 1 Light
7"W x 12"H x 6"D



5227 OWB - 5 Lights
10"W x 13"H



5216 OWB - 16 Lights
24"W x 19"H



5223 OWB - 3 Lights
10"W x 12"H x 6"D



5222 OWB - 2 Lights
10"W x 12"H x 6"D



5210 OWB - 10 Lights
22"W x 18"H

The beauty of cast Spanish solid brass fixtures finished in an olde world bronze finish (OWB) or silver oxide Millennium Silver (MS) bring back the nostalgia of original period chandeliers.

Suffix finish code when ordering:
MS Millennium Silver
OWB Olde World Bronze



5518 OWB - 18 Lights
29"W x 26"H

5204 OWB - 4 Lights
12"W x 12"H



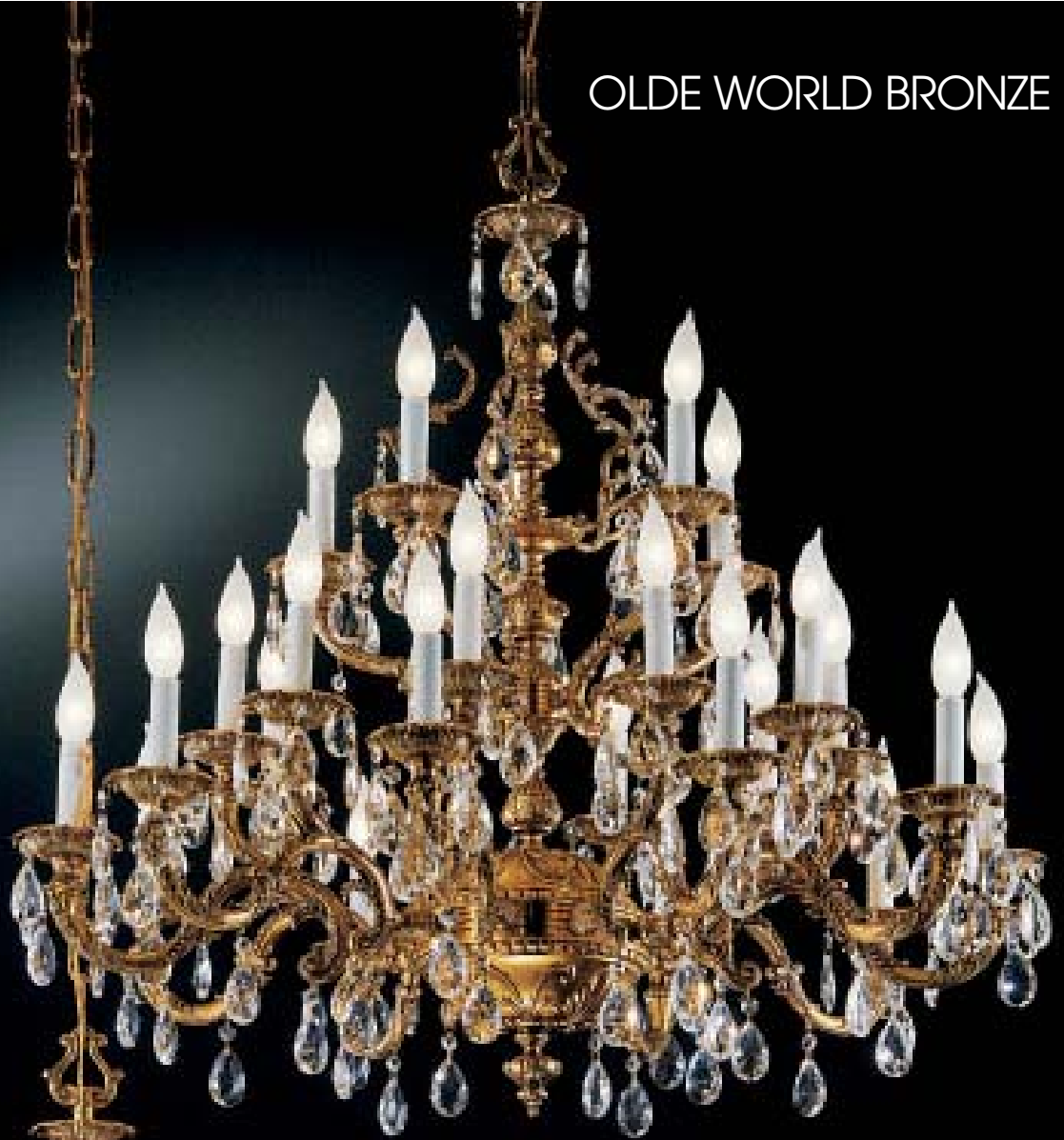
5515 OWB - 15 Lights
25"W x 23"H

Suffix crystal code when ordering:

I	Italian
C	Crystalique
SC	Swarovski
S	Strass®

These are supplied with Italian Swedish cut prisms (I). For better crystal definition, this series is available with Crystalique hand cut, hand polished prisms (C), Swarovski (SC) and Strass® crystal.

OLDE WORLD BRONZE



5525 OWB - 10+10+5 Lights
32"W x 34"H



5516 OWB
8+8 Lights
31"W x 27"H

Specify finish code when ordering:

MS Millennium Silver
OWB Olde World Bronze



MILLENNIUM SILVER



5525 MS - 10+10+5 Lights
32"W x 34"H

Heavy cast bronze chandeliers added to the Barcelona line offered in both the original natural bronze with light antique finish, what we call Olde World Bronze (OWB), or our Millennium Silver (MS) finish.



Suffix finish code when ordering:
MS Millennium Silver
OWB Olde World Bronze

5516 MS - 8+8 Lights
31"W x 27"H

BARCELONA II

MILLENNIUM SILVER



5204 MS - 4 Lights
12"W x 12"H



5227 MS - 5 Lights
10"W x 13"H



5222 MS - 2 Lights
10"W x 12"H x 6"D



5210 MS - 10 Lights
22"W x 18"H



5216 MS - 16 Lights
24"W x 19"H

Suffix crystal code when ordering:

- I Italian
- C Crystalique
- SC Swarovski
- S Strass®



CRYSTAL BASKETS

52314 OWB - 3 Lights
14"W x 8"H



52824 OWB - 8 Lights
24"W x 9"H

52518 OWB - 5 Lights
18"W x 8.5"H



Engraved brass galleries lightly antiqued in French gold with chrome reflectors and draped with attractive Italian graduated crystal chains. For better definition and sharper cuts of crystal, our Crystalique crystal is available. Suffix C when ordering this way otherwise Italian crystal will be provided.



52312 OWB - 3 Lights
12"W x 8"H



52210 OWB - 2 Lights
10"W x 7"H



52208 OWB - 2 Lights
8"W x 6.5"H

Same engraved banding as above but elegantly trimmed with shimmering showers of Strass or Crystalique-Plus crystal. Suffix S for Strass®, CP for Crystalique-Plus™.



51312 OWB - 3 Lights
12"W x 9"H



51210 OWB - 2 Lights
10"W x 8"H



51208 OWB - 2 Lights
8"W x 6"H

COMMERCIAL CRYSTAL BASKETS



52048 OWB - 20 Lights
48"W x 17"H



52036 OWB - 12 Lights
36"W x 15"H



52030 OWB - 10 Lights
30"W x 12"H



Neo-Classic CLASSIC Empires

In the same way that Classical music is the mother of contemporary melody, Traditional Empire lighting designs are the root of all Neo-Classic empires. Taking from the grand ballrooms and Royal sitting rooms of historical palaces and chateaus, our more updated versions exude the same grace, elegance and grandeur but redefined to fit today's contemporary decorating schemes.

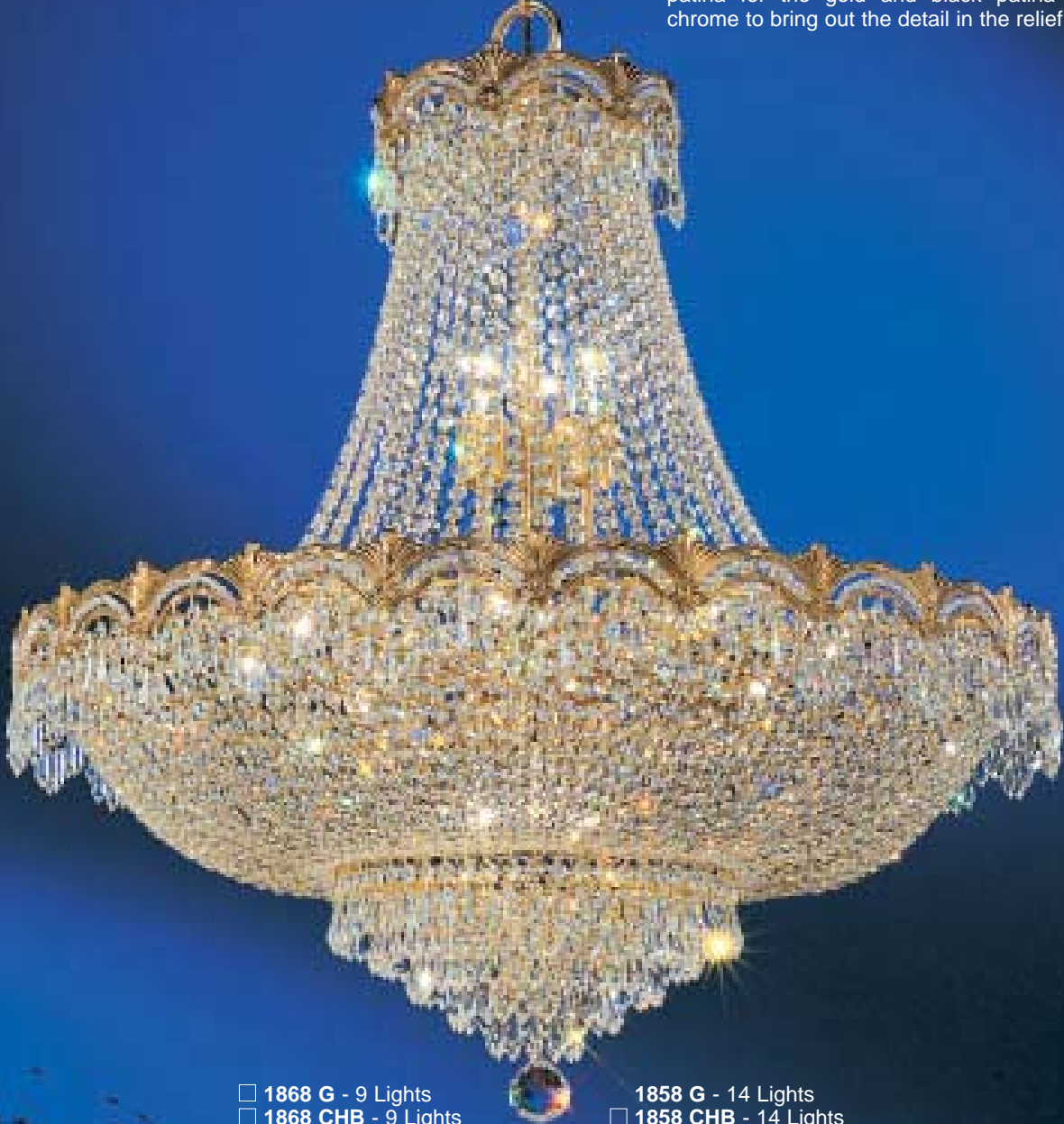
All our chandelier and matching accessory frames are meticulously manufactured by our Spanish and Italian craftsmen out of solid brass and then finished in 24k gold and chrome. This guarantees lifetime protection from tarnishing or losing its original beautiful finish. New finishes added are Aged Bronze, Copper Bronze and Roman Bronze.

Remember, not all chandeliers are created equal. Many other chandeliers are made of non-brass material and are not plated. Be an informed buyer. Don't settle for less. Demand the best. When making a choice always ask for a Classic empire chandelier.

REGENCY II

Borrowing from the past, these solid brass Spanish frames are meticulously dressed with jewelry-like crystal trim. "Bracelets" of crystal spheres adorn the drape bandings and crowns.

Aside from the original 24k gold plated finish, this entire family is now offered in chrome with black patina (see pages 97-98). The crevices on the cast frames are subtly touched with light brown patina for the gold and black patina for the chrome to bring out the detail in the relief work.



- 1868 G - 9 Lights
- 1868 CHB - 9 Lights
25"W x 34"H

- 1858 G - 14 Lights
- 1858 CHB - 14 Lights
33"W x 36"H

Not shown

Suffix finish code when ordering:
G 24K Gold
CHB Chrome with Black patina



1860 G - 8+15 Lights
 1860 CHB - 8+15 Lights
45"W x 48"H

Suffix crystal code when ordering:
CP Crystalique-Plus™
SC Swarovski Crystal
S Strass®

REGENCY II



1868 G - 9 Lights
25"W x 34"H

1855 G - 8 Lights
 1855 CHB - 8 Lights
21"W x 29"H



1850 G - 2 Lights
 1850 CHB - 2 Lights
9"W x 6"H x 6"D



1859 G - 5+8 Lights
33"W x 34"H

Not shown

Suffix crystal code when ordering:

CP Crystalique-Plus™

SC Swarovski Crystal

S Strass®

These chandeliers and matching sconces infuse elegance to any room whether it is the grand foyer, the formal dining room, the powder room or any other room waiting to be dressed.



1857 G - 5 Lights
 1857 CHB - 5 Lights
 21"W x 20"H

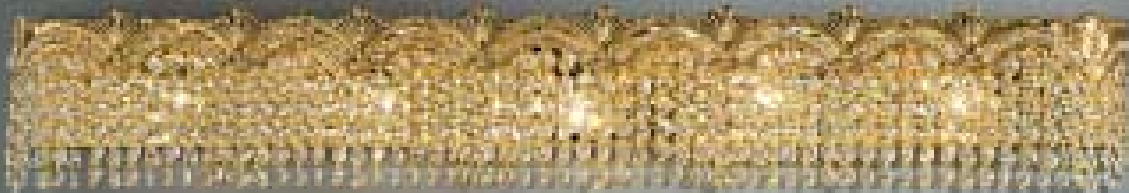


1856 G - 3 Lights
 1856 CHB - 3 Lights
 13"W x 15"H

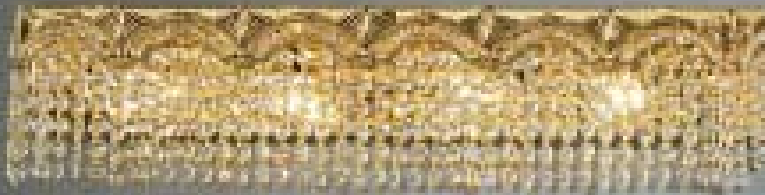
To facilitate the lighting decorating process, we offer an entire "family" that includes matching semi-flush baskets, wall sconces and vanity bath bars.



1854 G - 6 Lights
 1854 CHB - 6 Lights
 48"W x 6.5"H x 4"D



1853 G - 5 Lights
 1853 CHB - 5 Lights
 39"W x 6.5"H x 4"D



1852 G - 4 Lights
 1852 CHB - 4 Lights
 27"W x 6.5"H x 4"D

Not shown

Suffix finish code when ordering:
 G 24K Gold
 CHB Chrome with Black Patina



1851 G - 2 Lights
 1851 CHB - 2 Lights
 18"W x 6.5"H x 4"D

REGENCY II



1855 CHB - 8 Lights
 1855 G - 8 Lights
21"W x 29"H



1850 CHB - 2 Lights
 1850 G - 2 Lights
9"W x 6"H x 6"D



1859 CHB - 5+8 Lights
 1859 G - 5+8 Lights
33"W x 34"H

Not shown

The entire Regency II collection is now available in chrome with black patina as shown.

Suffix crystal code when ordering:

CP Crystalique-Plus™
SC Swarovski Crystal
S Strass®



1868 G - 9 Lights
 1868 CHB - 9 Lights
25"W x 34"H

1858 CHB - 14 Lights
 1858 G - 14 Lights
33"W x 36"H

Suffix crystal code when ordering:
CP Crystalique-Plus™
SC Swarovski Crystal
S Strass®

PRINCESS



1873 G - 13 Lights
24"W x 32"H



1872 G - 12 Lights
22"W x 31"H

Suffix crystal code when ordering:
CP Crystalique-Plus™
SC Swarovski Crystal
S Strass®



1874 G - 18 Lights
29"W x 41"H



1870 G - 3 Lights
10"W x 13"H x 6"D

Transitional styling blends the old with the new. Using traditional "empire" designs but streamlining the form by hiding most of the metal structure that holds the crystal makes this Princess series very versatile and desirable for either contemporary or traditional elegant homes of the new millennium.



1883 G - 9 Lights
24"W x 19"H



1882 G - 8 Lights
22"W x 17"H

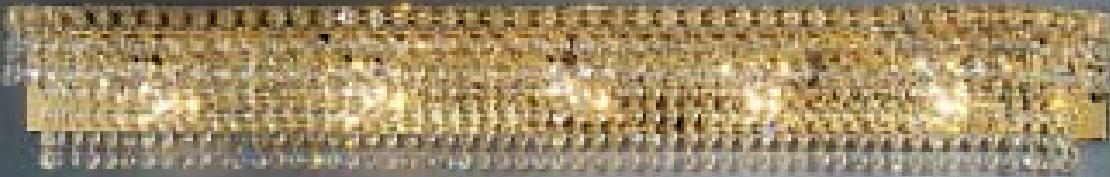


1881 G - 3 Lights
14"W x 13"H

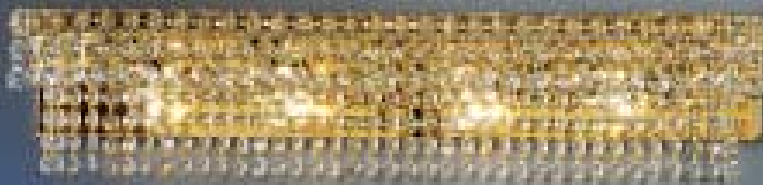
Crystal baskets and vanity bath bars.



1888 G - 6 Lights
48"W x 5.5"H x 4"D



1887 G - 5 Lights
40"W x 5.5"H x 4"D



1886 G - 4 Lights
27"W x 5.5"H x 4"D



1885 G - 2 Lights
18.5"W x 5.5"H x 4"D

Bathrooms are very extensively decorated and nothing makes a bathroom more elegant than a crystal chandelier, basket or vanity bar - or all the above!

Suffix crystal code when ordering:

CP Crystalique-Plus™
SC Swarovski Crystal
S Strass®

1879 G - 40 Lights
36"W x 72"H

1878 G - 24 Lights
28"W x 53"H



Knowing how important it is to decorate homes with matching lighting that flows from room to room, Classic provides this series with large entryway statement pieces, chandeliers with no exposed lights or with candles, semi-flush hall or small area baskets and bathroom or powder room vanity bars.

REGENCY



1815 G - 8 Lights
21"W x 29"H



1810 G - 3 Lights
10"W x 14"H x 7"D



1816 G - 9 Lights
25"W x 32"H

Strings of small optic spheres and almond-shaped prism cameos adorn the solid brass cast crowns and bandings of these solid brass Spanish 24k goldplated frames. Graduated chains of crystal octagons, baguettes and spears complete the ensemble. "Jewelry in lighting".



1818 G - 14 Lights
33"W x 36"H

Suffix crystal code when ordering:
CP Crystalique-Plus™
SC Swarovski Crystal
S Strass®

CROWN JEWELS

Lighting designed for your personal castle. This series is offered in either chrome for brilliance or gold for warmth. The high-quality metalwork combined with European made lead crystal column parts and lavishly decorated with the highest quality crystal graduated chains and prisms make these fixtures fit for a king. The removable lead crystal Tiara ornamentation sparkles like diamonds.




69786 GP CP - 6 + (9)Lights
26"W x 22"H



69789 CH CP - 8+(12)+4+(8) Lights (40W Max)
37"W x 43"H

Suffix finish code when ordering:


CH Chrome
GP Gold Plate




69781 CH CP - 6 Lights
14"W x 12"H




69783 CH CP - 16 Lights
20"W x 23"H



69786 CH CP - 6 + (9) Lights
26"W x 22"H



69788 CH CP - 8+(16) Lights
32"W x 27"H



69782 CH CP - 2 Lights
13"W x 10"H x 7"D

Suffix crystal code when ordering:
CP Crystalique-Plus™
SC Swarovski Crystal
S Strass®

EMILY

ROMAN BRONZE

Borrowing a style from the past and sculpturing it into a contemporary design makes its transition into the present. Solid brass frames with meticulous detail are finished in Chrome (CH) for that transition into a stunning contemporary look or Roman Bronze (RB) for a more traditional look. Beautiful styling, solid brass, lead crystal quality trim at affordable prices. A winner!



69763 RB CP - 5 Lights
14"W x 12"H



69762 RB CP - 2 Lights
13"W x 14"H x 6"D



69766 RB CP - 6+(1) Lights
26"W x 27"H





69765 CH CP - 6 Lights
18"W x 26"H



69763 CH CP - 5 Lights
14"W x 12"H



69766 CH CP - 6+(1) Lights
26"W x 27"H



69768 CH CP
8+(1) Lights
30"W x 32"H



69762 CH CP - 2 Lights
13"W x 14"H x 6"D

Suffix finish code:
CH Chrome
RB Roman Bronze

Suffix crystal code when ordering:
CP Crystalique-Plus™
SC Swarovski Crystal
S Strass®

MERLOT



5762 AGB AI
2+(1) Lights
16"W x 20"H x 13"D



5763 AGB AI
3 Lights
15"W x 31"H



5766 AGB AI
6+(3) Lights
28"W x 31"H



5760 AGB AI - 2 Lights
15"W x 13"H



5768 AGB AI - 8+(4) Lights
33"W x 34"H

Like an aged bottle of the best Merlot wine, these chandeliers come from Europe. Spanish craftsmen fashioned this series from old World designs and finished it in an Aged Bronze color (AGB) and trimmed it with hand rubbed antique Italian crystal (AI) for historical authenticity.



5769 AGB AI - 12+(6)+6 Lights
43"W x 63"H

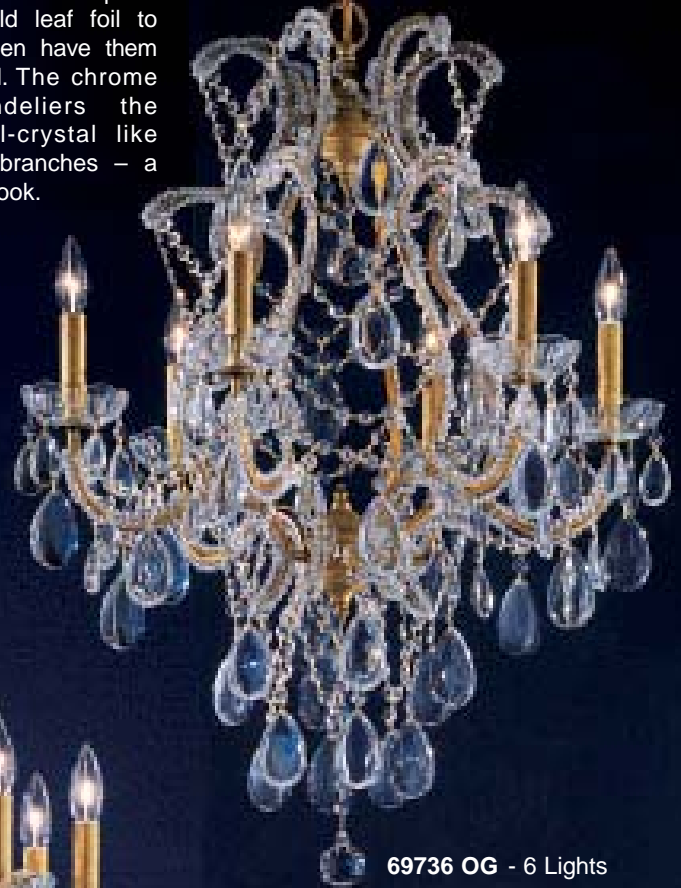
TIVOLI

OLDE GOLD

Iron frames delicately adorned with strands of multi-faceted beads like Strings of Pearls that follow the symmetry of the chandeliers and sconces then lavishly trimmed with drapes of Crystalique™ oyster crystal. To give our customers choices, we have them finished in an earthy traditional Gold Leaf look (Olde Gold) or contemporary Chrome finishes. The Gold takes you back in time when European Artisans applied gold leaf foil to cover the frames then have them decorated with crystal. The chrome gives the chandeliers the appearance of all-crystal like icicles on frozen branches – a more contemporary look.



69734 OG - 4 Lights
17"W x 21"H



69736 OG - 6 Lights
24"W x 29"H



69730 OG - 10 Lights
28"W x 36"H



69732 OG - 2 Lights
13"W x 12"H x 7"D



69734 CH - 4 Lights
17"W x 21"H



69736 CH - 6 Lights
24"W x 29"H



69730 CH - 10 Lights
28"W x 36"H



69732 CH - 2 Lights
13"W x 12"H x 7"D



Suffix finish code with ordering:
CH Chrome
OG Olde Gold

DANIELE



8395 EB - 5 Lights
22"W x 23"H



8394 GP - 4 Lights
11"W x 16"H



8398 CH - 8 Lights
25"W x 25"H



8392 GP - 2 Lights
13"W x 14"H x 8"D

With crystal chandeliers there are two general misconceptions:

1. All crystal chandeliers are expensive.
2. If it's beautiful, it *must* be expensive.

Well, Classic has proven them wrong with the introduction of this Daniele collection.

Our formula is quite simple. First use inexpensive frames but without sacrificing quality fabrication or materials. These frames have a great looking finish with lead crystal column parts and bobeches. Second, trim the fixtures with quality crystal but just be prudent on how it's trimmed. The end result is simple - the creation of beautiful crystal chandeliers at very affordable prices.





8399 GP - 8+4 Lights
29"W x 36"H

This series is created with three levels of crystal trim. Those shown in these two pages are the Premium level. In the next couple of pages are our Upgrade and Standard versions. Both the Premium and Upgrade use Crystalique™ grade crystal but can be upgraded to Swarovski Crystal (SC) or Strass® (S). The Standard version uses Italian crystal.

Suffix finish code when ordering:

CH	Chrome
EB	English Bronze
GP	Gold Plated

Suffix Crystal code when ordering:

C	Crystalique™
SC	Swarovski Crystal
S	Strass®

STANDARD



8374 CH - 4 Lights
11"W x 15"H



8375 CH - 5 Lights
22"W x 17"H



8378 GP - 8 Lights
25"W x 20"H




8372 EB - 2 Lights
13"W x 12"H x 8"D




8379 EB - 8+4 Lights
29"W x 25"H

This Standard version of crystal trim which utilizes Italian crystal prisms is made for very affordable crystal chandeliers to be used for store promotions or to meet builders' low lighting budget allowances.


UPGRADE




8384 EB
4 Lights
11"W x 15"H




8385 GP - 5 Lights
22"W x 19"H



8388 EB - 8 Lights
25"W x 22"H



8382 CH - 2 Lights
13"W x 15"H x 8"D



8389 CH - 8+4 Lights
29"W x 29"H

This Upgrade version of crystal trim uses the identical Crystalique™ quality as the Premium level only a little less crystal. The elongated strands underneath are not as long and the draping is not as intricate. It has its own look and meets a lower price point.

If upgrade crystal is ordered, make sure to suffix the crystal trim code SC or S.

GRACE LANTERNS



81026 CPB - 9 Lights
22"W x 38"H



81024 CPB - 4 Lights
14"W x 23"H



81029 CPB - 12 Lights
30"W x 54"H

These hall and entryway lanterns will fill large spaces without emptying the coffers. Combine these lanterns with the matching dining room chandeliers for a perfectly matched set.

GRACE

Hammered crown and band combined with clear glass beads make a wonderful melding of delicate yet sturdy grouping. Diamond shaped arms, smudge pot candle bases above unique bobeches and well-proportioned shades complete the attention to detail.
Finished in Copper Bronze (CPB).



81022 CPB - 2 Lights
15"W x 19"H x 9"D



81023 CPB - 3 Lights
20"W x 28"H



81025 CPB - 5 Lights
25"W x 32"H



81028 CPB - 8 Lights
33"W x 42"H



Contemporary CLASSIC Crystal

The timeless elegance and beauty of crystal does not have to be confined to traditional styles alone. Classic recognizes this need and feels that the marriage of contemporary chandelier designs trimmed with sharp faceted crystal shapes gives today's homeowner the option to grace their contemporary homes with modern sophistication and elegance.

Geometric designs, Neo-Classic empires, frameless look baskets and sprays give you clean tailored crystal lighting to accentuate any stylish décor.

This chandelier was precisely created to grace those tall foyers with large picture windows. A most elegant exclamation point! Also used for commercial applications.

To satisfy the need for a more contemporary look, chrome is available by special order.

AMBASSADOR



1606 G - 30 Lights
48"W x 73"H

Suffix finish code when ordering:

G 24K Gold
CH Chrome

Suffix crystal code when ordering:

CP Crystalique-Plus™
SC Swarovski Crystal
S Strass®

AMBASSADOR



1604 G - 30 Lights
30"W x 41"H



1603 G - 18 Lights
26"W x 35"H

Suffix finish code when ordering:
G 24K Gold
CH Chrome (available by Special order)



The ultimate contemporary
crystal chandelier.



Suffix crystal code
when ordering:
CP Crystalique-Plus™
SC Swarovski Crystal
S Strass®

1605 G - 30 Lights
32"W x 48"H

AMBASSADOR



1601 G - 12 Lights
20"W x 21"H



1601 CH - 12 Lights
20"W x 21"H

Suffix finish code when ordering:
G 24k Gold
CH Chrome

Suffix crystal code when ordering:
CP Crystalique-Plus™
SC Swarovski Crystal
S Strass®



1621 CH - 4 Lights
13"W x 9.5"H



1622 G - 7 Lights
16"W x 10"H



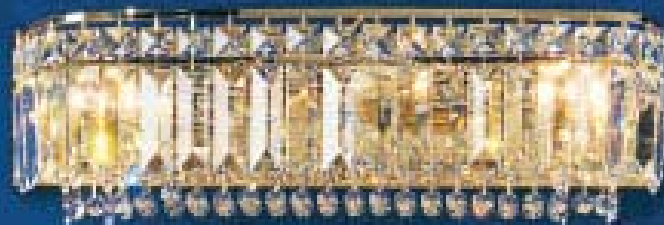
1620 G - 1 Light
8"W x 9.5"H



1623 G - 2 Lights
10"W x 8.5"H x 5"D



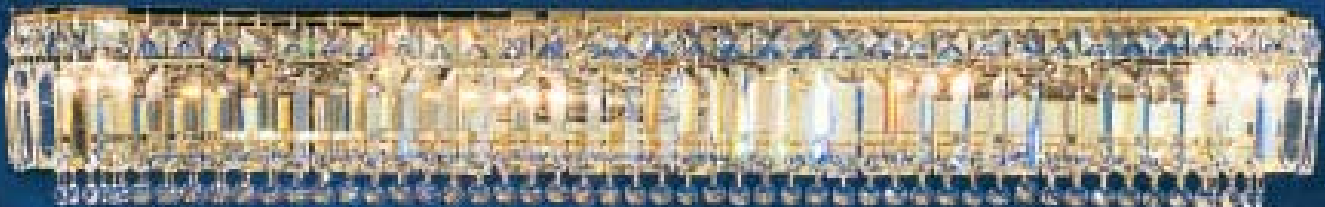
1623 CH - 2 Lights
10"W x 8.5"H x 5"D



1624 G - 3 Lights
18"W x 5.5"H x 4.5"D



1625 CH - 4 Lights
28"W x 5.5"H x 4.5"D



1626 G - 6 Lights
36"W x 5.5"H x 4.5"D

1627 - 8 Lights
48"W x 5.5"H x 4.5"D

Not shown

Crystal vanity bath bars in four popular sizes

EMPRESS

CHROME



Suffix finish code when ordering:

G 24K Gold
CH Chrome

53324 CH - 12 Lights
24"W x 12"H
Double tier basket



53318 CH - 9 Lights
18"W x 10"H
Double tier basket



53314 CH - 6 Lights
14"W x 8"H



53312 CH - 4 Lights
12"W x 7"H



53310 CH - 3 Lights
10"W x 7"H



53308 CH - 3 Lights
8"W x 6"H

The ultimate in crystal beauty. Chrome-plated frames trimmed with either Strass or Crystalique-Plus crystal with nickel clips gives the illusion of crystal baskets suspended in thin air. The frameless look! Crystalique-Plus is a high grade quality crystal having a more intensive color spectrum.



53436 G - 24 Lights
36"W x 20"H

53336 CH - 24 Lights (Chrome)
36"W x 20"H

Same frames as opposing page but in 24k goldplated and trimmed with Strass or Crystalique-Plus.



53412 G - 4 Lights
12"W x 7"H

53414 CH - 6 Lights
14"W x 8"H



53418 G - 9 Lights
18"W x 10"H

53424 CH - 12 Lights
24"W x 12"H



53410 - 3 Lights
10"W x 7"H

53408 - 3 Lights
8"W x 6"H

Available but not shown.

Suffix crystal code when ordering:

CP Crystalique-Plus™
SC Swarovski Crystal
S Strass®

UPTOWN

These European made frames have a mirror-like chrome plated finish over faceted solid brass frames that coordinate perfectly with the contemporary square and rectangle crystal trim. Regardless of whether the setting is Uptown, Downtown, or the trendy suburbs this series will fit in any contemporary decor.



1905 CH CP - 5 Lights
16"W x 24" to 48"H



1902 CH CP - 2 Lights
10"W x 7"H x 3.5"D



1909 CH CP - 10 Lights
32"L x 13"W x 24" to 48"H

Suffix crystal code when ordering:

CP Crystalique-Plus™
SC Swarovski Crystal
S Strass®



DIAMANTE

Spanish solid brass chrome plated frames with glittering cut spheres. A contemporary look that will live forever.

Suffix crystal code when ordering:

CP	Crystalique-Plus™
SC	Swarovski Crystal
S	Strass®



1893 CH CP - 3 Lights
14"W x 11"H
Dual Mount - chain hung
or flush mount



1895 CH CP - 5 Lights
16"W x 13"H



1897 CH CP - 7 Lights
23"W x 19"H



1892 CH CP - 2 Lights
12"W x 8"H x 6"D

SOLITAIRE



69771 CH CP - 6 Lights
16"W x 12"H



69772 CH CP - 2 Lights
13"W x 10"H x 7"D



69776 CH CP - 6+(6) Lights
26"W x 24"H





This series offers jewel-like styling. Solid brass frames are finished in mirror-like chrome and lavished with lead crystal spheres. The tight weave of the design closes the bottom so as to hide the inside lights. These cut balls are offered in three crystal qualities, Crystalique-Plus™ (standard), Swarovski or Strass® (upgrades).

69773 CH CP - 15 Lights
23"W x 28"H

Suffix crystal code when ordering:

- CP Crystalique-Plus™
- SC Swarovski Crystal
- S Strass®



SPRAYS



1002 G - 2 Lights
11"W x 9"H x 5"D



1031 G - 3+1 Lights
16"W x 13"H



1041 G - 4+1 Lights
20"W x 14"H



1051 G - 5+1 Lights
24"W x 21"H

24k goldplated sprays lavishly trimmed with showers of shimmering crystal jewels and spears. Frames are available in chrome by special order.

Suffix crystal code when ordering:
CP Crystalique-Plus™
SC Swarovski Crystal
S Strass®



1061 G - 26 Lights
36"W x 60"H

Suffix finish code when ordering:
G Gold
CH Chrome

BEVERLY HILLS



4065 TVB - 4 Lights
18"W x 8"H



4060 TVB - 1 Light
9"W x 12"H



4062 TVB - 2 Lights
16"W x 14"H x 5"D



4064 TVB - 4 Lights
18"W x 16"H



4061 TVB
1 Light
8"W x 14"H



4066 TVB - 6 Lights
26"W x 19"H

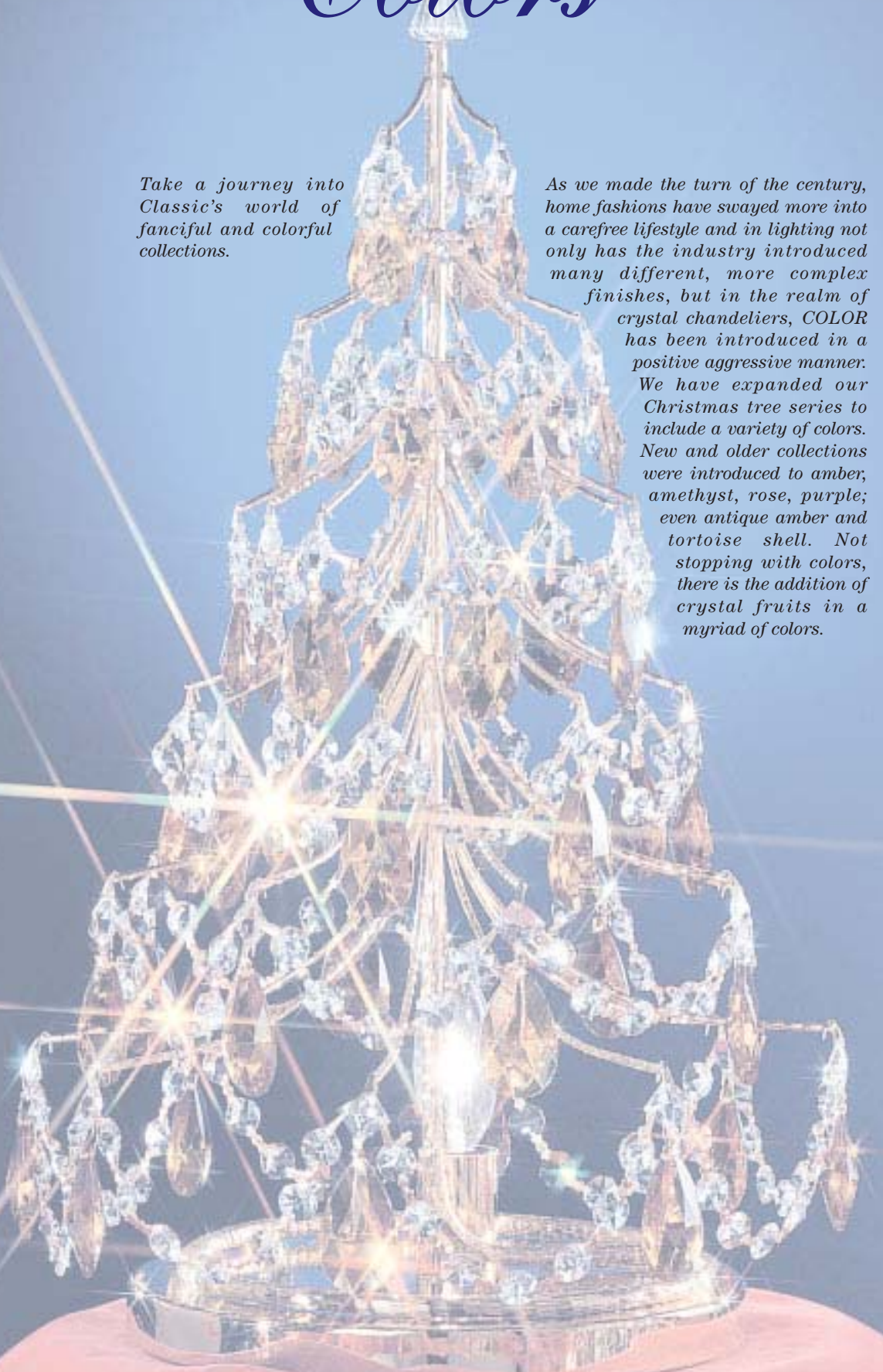
Italian design at its best. Wispy, delicate "branches" with crystal tips and mouth-blown Murano glass "tulip" shades finished in Treviso Bronze (TVB). Delicate, unique and contemporary.

4068 TVB - 8+4 Lights
32"W x 24"H

CLASSIC *Colors*

Take a journey into Classic's world of fanciful and colorful collections.

As we made the turn of the century, home fashions have swayed more into a carefree lifestyle and in lighting not only has the industry introduced many different, more complex finishes, but in the realm of crystal chandeliers, COLOR has been introduced in a positive aggressive manner. We have expanded our Christmas tree series to include a variety of colors. New and older collections were introduced to amber, amethyst, rose, purple; even antique amber and tortoise shell. Not stopping with colors, there is the addition of crystal fruits in a myriad of colors.



CHERYL'S CRYSTAL CHRISTMAS TREES

WITHOUT LIGHT KITS

Suffix crystal trim code when ordering:

PAM Crystalique Amber
PAT Crystalique Amethyst
PRD Crystalique Red
PRO Crystalique Rose



1013 PAT Amethyst
12"W x 20"H



1014 PRD Red
12"W x 20"H

WITH LIGHT KITS

Use the Christmas trees with or without the optional, removable light kits. The kit consists of a gold or chrome base, cord, line switch and plug.



1011 PRO - 1 Light Rose
12"W x 21"H



1012 PAM - 1 Light Amber
12"W x 21"H

CHERYL'S COLLECTIONS



1013 CP
12"W x 20"H



1014 CP
12"W x 20" H

Perfect as a table centerpiece, on the fireplace mantle or anywhere.
Use the Christmas trees with or without the optional, removable light kits.
The kit consists of a gold or chrome base, cord, line switch and plug.

Add sparkle to your holidays or all year round with a crystal Christmas tree. Italian solid brass frames finished in 24k gold or chrome, elegantly trimmed with hand-cut, hand-polished lead crystal prisms, spears, French Pendants and drapes of shimmering octagon jewels.



1011 CP - 1 Light
12"W x 21"H



1012 CP - 1 Light
12"W x 21"H

Available with three types of crystal -
Crystalique-Plus, Swarovski or Strass.
Suffix crystal code when ordering.
CP Crystalique-Plus™
SC Swarovski
S Strass®

MINI CRYSTAL TREES

WITH GRAPE PRISMS

Suffix crystal code when ordering:

CP	Cristallique-Plus™
GAM	Grape Amber
GAT	Grape Amethyst
GFR	Grape Frosted White
GRO	Grape Rose

Mini Christmas trees in gold or chrome and trimmed with "grape" prisms and strings or matched faceted crystal beads. There are also available with the Cristallique -Plus™ (CP) crystal trim as shown in previous pages of the larger trees.

Not shown

Small trees with prisms and French Pendants.

1004 CP - Gold

1003 CP - Chrome



1004 GAM
10"W x 16"H



1003 GAT
10"W x 16"H



1003 GRO
10"W x 16"H



1004 GFR
10"W x 16"H

Light kits are not available for these smaller trees.

WITH FACETED CUT-BALLS

Suffix crystal code when ordering:

CLR Clear Cut Balls
GRE Green Cut Balls
RED Red Cut Balls
R&G Red and Green Cut Balls

Chrome or Gold mini trees trimmed with faceted cut-balls and strings of clear faceted crystal beads.



1004 RED
10"W x 16"H



1003 GRE
10"W x 16"H



1004 R&G
10"W x 16"H



1003 CLR
10"W x 16"H

VENEZIA



5772 DBP UP - 2 Lights Up
16"W x 10"H x 12"D



5772 DBP DN - 2 Lights Down
16"W x 10"H x 12"D



5773 DBP UD - 6 Lights Up & Down

5773 DBP DN All Lights Down

5773 DBP UP All Lights Up

28"W x 20"H



5772 DBP UD - 2 Lights Up & Down
16"W x 10"H x 12"D



5776 DBP - 6 Lights Down only
23"W x 19"H

Not shown

Spanish made solid brass frames meticulously finished in a dark bronze, hand buffed to create lustrous highlights and enhanced with Italian Murano hand blown glass shades. Unique design features lights facing up and down. Arms can be repositioned in the up or down position by the installer to suit individual taste.



PARISIAN



5754 AGB IRA - 4 Lights
17"W x 17"H



5756 AGB IRC - 6 Lights
22"W x 23"H



5752 AGB AI - 2 Lights
11"W x 11"H x 7"D



5758 AGB AI - 8 Lights
24"W x 24"H

This series draws from French Versailles styling. Sculpted out of solid brass, finished in a dark Aged Bronze finish (AGB) and trimmed with a variety of crystal options.

Our Italian Rock™ crystal is hand crafted in Italy by Venetian glass artisans to have the same look as quartz rock crystal but at a fraction of the cost. Each piece is unique.



Crystalique-Plus™
French Pandalog

Suffix crystal code when ordering:
AI Hand rubbed Antique Italian
CP Crystalique-Plus™
IRA Italian Rock™ Amber
IRC Italian Rock™ Clear
S Strass®
SC Swarovski Crystal

DYLAN



8362 EB IRC - 2 Lights
13"W x 12"H X 8"D



8365 EB SSC - 5 Lights
22"W x 17"H



8368 EB IRA - 8 Lights
25"W x 20"H

A perfect combination of English Bronze frames using sandstone glass and crystal trim. Appealing and affordable.



8364 EB IRC - 4 Lights
11"W x 15"H



8369 EB SSC - 8+4 Lights
29"W x 25"H

Suffix Crystal code when ordering:
SSC Sandstone Crystal
IRA Italian Rock™ Amber
IRC Italian Rock™ Clear

FLORENTINE

VENETIAN IVORY



4050 VNI
1 Light
10"W x 12"H



4053 VNI - 1 Light
12"W x 13"H



4052 VNI - 2 Lights
14"W x 11"H x 8"D



4054 VNI
1 Light
12"W x 14"H




4059 VNI - 1 Light
9"W x 12"H



4051 VNI - 1 Light
6"W x 22"H x 4"D
Wall Torchier



4055 VNI - 5 Lights
24"W x 18"H

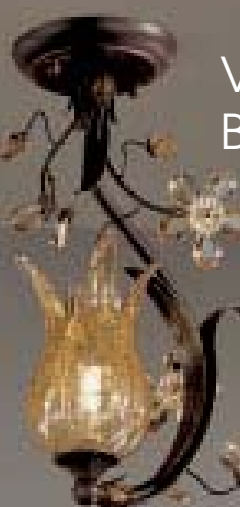


4058 VNI - 8 Lights
30"W x 24"H


VENETIAN BRONZE



4050 VNB
1 Light
10"W x 12"H




4053 VNB - 1 Light
12"W x 13"H



4052 VNB - 2 Lights
14"W x 11"H x 8"D




4054 VNB
1 Light
12"W x 14"H



4059 VNB - 1 Light
9"W x 12"H




4051 VNB
1 Light
6"W x 22"H x 4"D
Wall Torchier



4055 VNB - 5 Lights
24"W x 18"H

Delicate color crystal flowers and leaves surround the ivory and bronze iron frames and then enhanced with dainty tulip-like amber Murano glass shades. These fixtures are hand-painted in Italy to achieve a rich blend of subtle colors that enhance the floral design while being muted enough to fit almost any décor. A truly complete family of ceiling, wall and hanging chandeliers.



4058 VNB - 8 Lights
30"W x 24"H

Suffix finish code when ordering:
VNB Venetian Bronze
VNI Venetian Ivory

HARVEST MOON



10007 NBZ - 6 Lights
32"L x 24"W x 30"H
Chain/flush

Fixtures noted as "Chain/flush" are supplied with hardware to allow chain-hung or flush to the ceiling.



10006 NBZ - 6 Lights
35"L x 24"W x 14"H
Chain/flush



bottom view

Like a work of art, the incredibly natural bronze branches cradle the alabaster stone bowl making these inspiring sculptures a unique way to light any setting.

AUTUMN LEAVES



10015 NBZ - 5 Lights
36"W x 15"H
Chain/flush



10014 NBZ - 4 Lights
20"W x 69"H x 9"D
Wall Torchiere



10011 NBZ
1 Light
9"W x 16"H x 4"D



10016 NBZ - 6 Lights
33"W x 16"H
Chain-hung only



Life-like branches in a natural bronze with well-defined Murano glass leaves make this grouping a sight to behold. Each fixture is a unique work of art.

MORNING DEW



10029 NBZ - 12 Lights
45"L x 35"W x 26"H



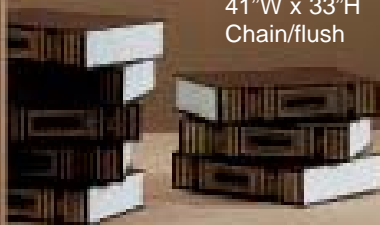
10022 NBZ - 2 Lights
17"W x 14"H x 11"D



10026 NBZ - 6 Lights
41"W x 33"H
Chain/flush

An artist's concept transposed into lighting - most ingenious. Branches sculpted from bronze are highlighted with gold to create stunning natural bronze, are adorned with crystal prisms and amber shades. Hand-made Italian glass candle holders will accept small candles. For a natural ambience, the lights can be dimmed and the candles lit creating a surreal romantic atmosphere. Add imagination and warmth to any room.

Both chandeliers are supplied with hardware to allow chain-hung or direct to the ceiling flush mount.



10025 NBZ - 5 Lights
33"W x 75"H

DANUBE

Spanish solid brass chandeliers finished in a rich Dark Bronze with Polished highlights (DBP), softened with elegant shades and lightly trimmed with amber prisms make this a delightful series to add color to any room setting.

Clear crystal prisms in Crystallique-Plus™, Swarovski and Strass® are also available.



1913 DBP PAM - 3 Lights
15"W x 18"H



1916 DBP PAM - 6 Lights
30"W x 23"H



1912 DBP PAM - 2 Lights
14"W x 13"H x 8"D



1918 DBP PAM - 12 Lights
42"W x 30"H

Suffix crystal code when ordering:
CP Crystallique-Plus™
PAM Prisms Amber
SC Swarovski Crystal
S Strass®

AURORA



69726 CH PAT
6 Lights
24"W x 26"H



69724 CH C
4 Lights
17"W x 20"H



69720 CH PRO - 10 Lights
28"W x 31"H



69722 CH GCP - 2 Lights
13"W x 12"H x 7"D

Delicate chrome or olde gold iron frames cleverly adorned with strands of multi-faceted beads, then lightly accented with color grape clusters, clear almond prisms, or colored almond prisms. Always suffix finish and crystal code when ordering.



69726 OG PAM - 6 Lights
24"W x 26"H



69724 OG C
4 Lights
17"W x 20"H



69720 OG GCA - 10 Lights
28"W x 31"H



69722 OG PRO - 2 Lights
13"W x 12"H x 7"D

Finish Code:
CH Chrome
OG Olde Gold

Suffix crystal code when ordering:
C Crystalique™
SC Swarovski Crystal
S Strass®
GCA Grape Cluster Amber
GCP Grape Cluster Purple
PAM Prism Amber
PAT Prism Amethyst
PRO Prism Rose

PALATIAL



1216 FBR OTS - 6 Lights
32"W x 28"H

Traditional styling is fashioned out of solid brass with Flemish finish and dressed with hand rubbed tortoise shell oyster crystal. This design is an elegant way to light up any room.

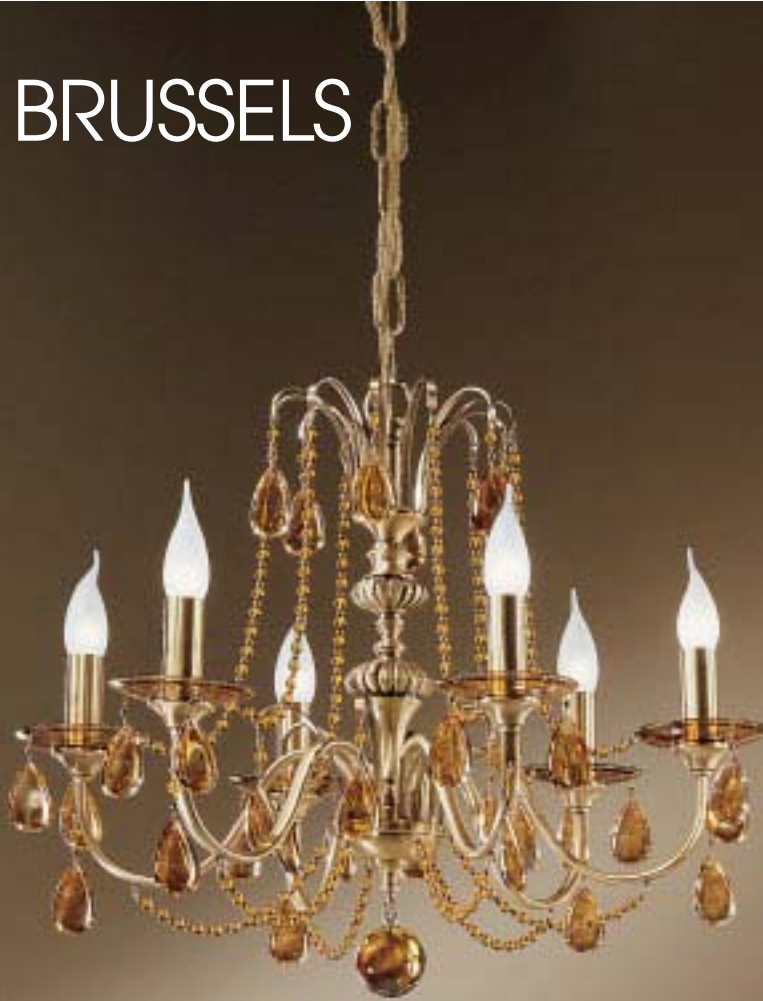


1212 FBR OTS - 2 Lights
14"W x 17"H x 7"D



1219 FBR OTS - 12 Lights
32"W x 33"H

BRUSSELS



1226 FBR OTS - 6 Lights
25"W x 20"H



1229 FBR OTS - 12 Lights
28"W x 27"H



1222 FBR OTS - 2 Lights
13"W x 12"H x 8"D

Finely chiseled Flemish Bronze (FBR) solid brass frames are tastefully dressed with hand rubbed tortoise shell oyster crystal and intricate bead work. Tailored and elegant.

GARDEN OF VERSAILLES



9054 ABG
4 Lights
14"W x 15"H



9055 ABG - 5 Lights
14"W x 21"H x 8"D




9063 ABG - 8+4+1 Lights
28"W x 39"H

The Chateau D'Versailles, the summer home of King Louis XIV was lavishly decorated with magnificent baroque chandeliers known today as Versailles. Classic has taken this ancient classical French lighting design and transformed it into a more modern, less formal appearance by using more contemporary finishes and an array of Crystalique™ crystal trim and fanciful Murano hand-made colored fruit and tear drops. It would make even King Louis XIV proud!



ANTIQUE BRONZE GOLD

All numbers displaying this symbol  have this unique center light feature.



 **9057 ABG PGR**
6+1 Lights
23"W x 32"H



9053 ABG DPK
3 Lights
13"W x 18"H x 7"D



9052 ABG DAT
2 Lights
12"W x 17"H x 6"D



 **9059 ABG GST**
8+1 Lights
28"W x 39"H

Suffix finish code when ordering:
ABG Antique Bronze with Gold
CH Chrome

Suffix glass code when ordering colored drops or fruit.
See page 157.



ANTIQUE BRONZE GOLD



9069 ABG ATZ
12+6+1 Lights
36"W x 55"H

How would you like to select your own accents on the chandelier you choose? Personalize it. First choose the item that will best meet your needs (number of lights and size). Then customize the trim to suit your personal taste - either with just the clear crystal trim or also with the colored fruits or tear drops. From the detail illustrations and the chandeliers featuring them, decide on the fruit or tear drop to dress your chandelier. Merely add the suffix code of the fruit or tear-drop you picked out.



GAT



GST



ATZ



PST



PGR



CAT



CRD



DAT



DPK



DAM



9069 CH - 12+6+1 Lights
36"W x 55"H

Suffix finish code when ordering:
ABG Antique Bronze with Gold
CH Chrome

Suffix glass code when ordering colored
drops or fruit. See page 157.




9054 CH GAT
4 Lights
14"W x 15"H



9055 CH CRD - 5 Lights
14"W x 21"H x 8"D



 **9063 CH DAT**
8+4+1 Lights
28"W x 39"H



CHROME



 **9057 CH**
6+1 Lights
23"W x 32"H



 **9059 CH**
8+1 Lights
28"W x 39"H



9053 CH
3 Lights
13"W x 8"H x 7"D



9052 CH - 2 Lights
12"W x 17"H x 6"D

Suffix finish code when ordering:
ABG Antique Bronze with Gold
CH Chrome

Suffix glass code when ordering
colored drops or fruit. See page 157.

69752 OG DCL

6 Lights
20"W x 15"H



69753 OG DAM

3 Lights
14"W x 24"H x 10"D



69758 OG DCL - 8 (+2) Lights

28"W x 33"H

69756 OG GST - 6 (+2) Lights

24"W x 32"H



A Classic original design consisting of empire chandeliers, semi-flush ceiling and wall sconce in the shape of leaves utilizing multi-faceted beading as the veining, adorned with Crystalique-Plus™, Swarovski or Strass® crystal and fanciful colored Murano hand-made fruits and drops from that Shabby Chic look.

Suffix crystal code when ordering:

- CP Crystalique-Plus™
- SC Swarovski Crystal
- S Strass®



69752 EP DCL
6 Lights
20"W x 15"H



Available in a more traditional Olde Gold finish or a contemporary Ebony Pearl.

69753 EP GAT
3 Lights
14"W x 24"H x 10"D



69756 EP DCL
6 (+2) Lights
24"W x 32"H



Suffix finish code when ordering:
OG Olde Gold
EP Ebony Pearl

Suffix glass code when ordering:
DAM Drops Amber
DCL Drops Clear
DSK Drops Smoke
GAT Grapes Amethyst
GST Grapes Straw

69758 EP DSK - 8 (+2) Lights
28"W x 33"H



GABRIELLE



8334 AW PAM
4 Lights
12"W x 16"H

8334 AW PAT - 4 Lights
12"W x 16"H

8334 AW PRO - 4 Lights
12"W x 16"H

8334 AW GCA - 4 Lights
12"W x 16"H

Crystal options: Clear almond prisms in your choice of quality grades (Strass, Swarovski or Crystalique), amber grape cluster or amber, amethyst or rose prisms.

Suffix crystal code when ordering:
C Crystalique™
SC Swarovski Crystal
S Strass®
GCA Grape Cluster Amber
PAM Prism Amber
PAT Prism Amethyst
PRO Prism Rose



8334 OG C - 4 Lights
12"W x 16"H



8334 EB PAM
4 Lights
12"W x 16"H



8334 EB GCA - 4 Lights
12"W x 16"H



8334 OG PAM - 4 Lights
12"W x 16"H

Always suffix finish code when ordering:

AW Antique White
EB English Bronze
OG Olde Gold

A whimsical union of traditional cast mini chandeliers with colorful crystal accents to grace any part of the home. Let your decorating inspiration guide you - either in powder rooms, baths, girl's rooms or anywhere else. Offered in three popular finishes: Antique White, English Bronze and Olde Gold.

PETITE FLEUR



8330 OG C
1 Light
6"W x 9"H



8330 AW PRO
1 Light
6"W x 9"H



8330 EB PAM
1 Light
6"W x 9"H



8332 OG PAM - 1 Light
6"W x 10"H x 9"D



8332 EB C - 1 Light
6"W x 10"H x 9"D



8332 AW PRO - 1 Light
6"W x 10"H x 9"D



8331 AW PAT - 1 Light
6"W x 10"H



8331 OG PAM - 1 Light
6"W x 10"H



8331 EB C - 1 Light
6"W x 10"H

Dainty one light mini leaf basket pendants, semi-flush and wall brackets, adorned with strings of lead crystal beads and color prisms. Offered in Antique White, English Bronze and Olde Gold finishes. Always suffix finish code and crystal options when ordering.



8331 OG C - 1 Light
6"W x 10"H



8331 EB PAM - 1 Light
6"W x 10"H



8331 AW C - 1 Light
6"W x 10"H



8331 AW PRO - 1 Light
6"W x 10"H

Finish code:

AW Antique White
EB English Bronze
OG Olde Gold

Suffix crystal code when ordering:

C Crystalique™
PAM Prism Amber
PAT Prism Amethyst
PRO Prism Rose

MEDITERRANEAN



1205 ML FTS - 5 Lights
28"W x 30"H



1206 ML FTS - 6 Lights
30"W x 36"H



1202 ML FTS - 2 Lights
13"W x 16"H x 7"D



1208 ML FTS - 8 Lights
35"W x 41"H

Solid brass frames are formed into a simple but tasteful design and complemented by the unusual Mediterranean Leather (ML) finish then trimmed with hand rubbed tortoise shell French Pendulogs.

Neo-Classic Chandeliers

As we said earlier in another group, classical music was the mother of contemporary melody, so too the origin of our contemporary and neo-classic chandelier designs evolved from centuries of traditional lighting designs. Many have sharp similarities to their early ancestry others are mere subtle illusions of their heritage.

From its inception Classic's line almost exclusively consisted of chandeliers. Our experience and over thirty years of research enables us to be the authority on tasteful, good looking chandelier designs that clearly fit into all semi-traditional and neo-classic decorating applications.

In addition to traditional 24k gold and gold plated, we also developed satin nickel; oxidized Antique Bronze, antique and satin gold, and English Bronze.

This section of chandeliers is made up of the following groupings:

Brass and Lead Crystal

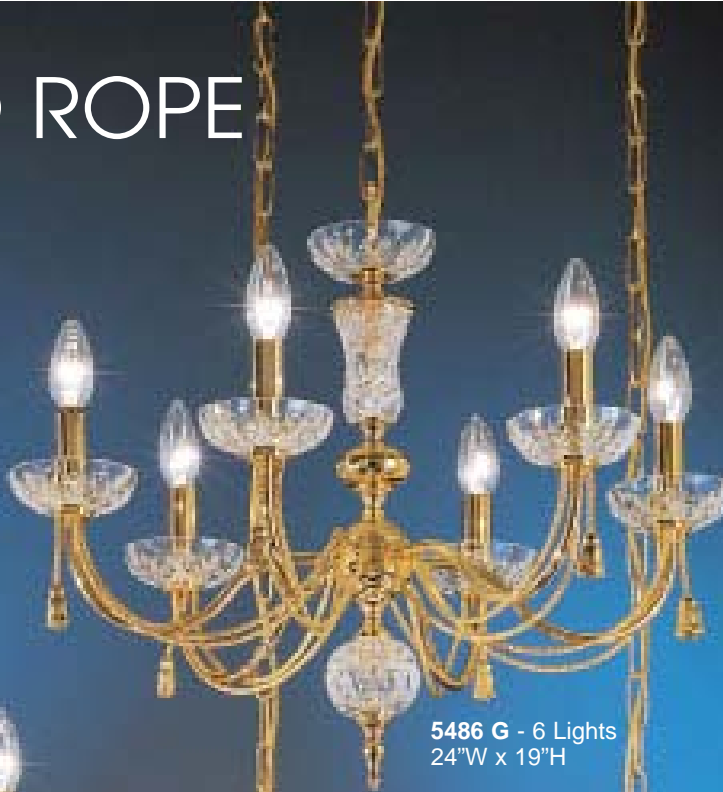
Classic combines solid brass metalwork with lead crystal founts, columns and bobeches to create sharply tailored, elegant lighting such as our Weatherford Rope, La Paloma and Rialto.



WEATHERFORD ROPE



5482 G - 2 Lights
14"W x 12"H x 6"D



5486 G - 6 Lights
24"W x 19"H



5489 G - 8+4 Lights
27"W x 24"H



5484 G - 4 Lights
15"W x 16"H



5488 G - 8 Lights
27"W x 19"H

Suffix finish code when ordering:

G Gold
SN Satin Nickel

Elegantly styled chandeliers of braided rope and 24% lead crystal columns, founts and bobeches are fashioned by our Spanish craftsmen from solid brass and finished in 24k gold and satin nickel to add stature and class to any home or commercial setting; an oxymoron perhaps but thus creating contemporary classic chandeliers.



5480 G - 12+6+3 Lights
38"W x 40"H

5480 SN - 12+6+3 Lights

To fill that volume space in a large foyer, hotel lobby or grand ballroom, this series provides two large chandeliers (5480 and 5481) matching the rest of this series

Not shown



WEATHERFORD ROPE



5482 SN - 2 Lights
14"W x 12"H x 6"D



5486 SN - 6 Lights
24"W x 19"H



5489 SN - 8+4 Lights
27"W x 24"H



5484 SN - 4 Lights
15"W x 16"H



5488 SN - 8 Lights
27"W x 19"H

Suffix finish code when ordering:

G 24k Gold
SN Satin Nickel

SATIN NICKEL



5481 SN - 16+8+4 Lights
54"W x 49"H

5481 G - 16+8+4 Lights

Not shown



LA PALOMA

SATIN GOLD



4503 SNG - 3 Lights
19"W x 31"H



4500 SNG - 2 Lights
17"W x 18"H



4501 SNG - 2 Lights
12"W x 14"H x 5"D



4502 SNG - 2 Lights
13"W x 11"H x 7"D



4509 SNG - 9 (+3) Lights
27"W x 31"H

Spanish cast solid brass frames finished in either Satin Gold (SNG) or Antique Bronze (ABZ) finish. These are equipped with frosted, scalloped, shell-like glass.

ANTIQUÉ BRONZE



4503 ABZ - 3 Lights
19"W x 31"H



4500 ABZ - 2 Lights
17"W x 18"H



4501 ABZ - 2 Lights
12"W x 14"H x 5"D



4502 ABZ - 2 Lights
13"W x 11"H x 7"D



4509 ABZ - 9 (+3) Lights
27"W x 31"H

Suffix finish code with ordering:
ABZ Antique Bronze
SNG Satin Gold

RIALTO

CONTEMPORARY



8352 CH - 2 Lights
10"W x 12"H x 10"D



8354 CH - 8+4 Lights
28"W x 29"H



8351 CH
1 Light
5"W x 9"H x 8"D



8353 CH - 3 Lights
10"W x 18"H x 10"D



8358 CH - 8 Lights
28"W x 25"H



8355 CH - 5 Lights
22"W x 24"H

Suffix finish code when ordering:

CH Chrome
GP Gold Plated





8359 CH - 10+10+5 Lights
38"W x 48"H

This series depicts a new twist to the traditional Maria Theresa look. Utilizing the standard frames but trimming them with contemporary Crystalique™ crystal "oysters," "kites," and "tear drops," up-dates the Maria Theresa style chandeliers. The overall effect is quite stunning and will fit many of today's more modern décor.



8352 GP - 2 Lights
10"W x 12"H x 10"D



8354 GP - 8+4 Lights
28"W x 29"H



8353 GP
3 Lights
10"W x 18"H x 10"D



8355 GP - 5 Lights
22"W x 24"H



8358 GP - 8 Lights
28"W x 25"H

Suffix finish code when ordering:

- CH Chrome
- GP Gold Plated

GOLD PLATED



8359 GP - 10+10+5 Lights
38"W x 48"H



RIALTO

TRADITIONAL



8342 CH - 2 Lights
10"W x 10"H x 10"D



8344 CH - 8+4 Lights
28"W x 27"H



8341 CH
1 Light
5"W x 9"H x 8"D



8343 CH - 3 Lights
10"W x 14"H x 10"D



8345 CH - 5 Lights
22"W x 23"H



8348 CH - 8 Lights
28"W x 21"H

Suffix finish code when ordering:

CH Chrome
GP Gold Plated





8349 CH - 10+10+5 Lights
38"W x 42"H

This version remains true to the original traditional Maria Theresa design and crystal trim. It is a better complement to the more conventional decorating schemes. It is trimmed with Crystalique-Plus™ as the standard trim. Because this version is offered with traditional trim, you can upgrade to Swarovski Crystal or Strass®.

Suffix crystal code when ordering:

CP	Crystalique-Plus™
SC	Swarovski Crystal
S	Strass®



8342 GP - 2 Lights
10"W x 10"H x 10"D



8344 GP - 8+4 Lights
28"W x 27"H



8341 GP
1 Light
5"W x 9"H x 8"D



8343 GP - 3 Lights
10"W x 14"H x 10"D



8345 GP - 5 Lights
22"W x 23"H



8348 GP - 8 Lights
28"W x 21"H



GOLD PLATED



8349 GP - 10+10+5 Lights
38"W x 42"H

Suffix finish code when ordering:

CH Chrome
GP Gold Plated

Suffix crystal code when ordering:

CP Crystalique-Plus™
SC Swarovski Crystal
S Strass®

PALERMO



8294 CH - 8+4 Lights
32"W x 26"H



8291 CH - 8 Lights
27"W x 30"H



8293 CH - 8 Lights
32"W x 26"H



8290 CH - 2 Lights
13"W x 10"H x 10"D



8292 CH - 2 Lights
13"W x 10"H x 10"D



This series gives us all a different twist on the all-glass arm chandeliers. It is a contemporary approach to all-glass chandeliers. All the columns and arms are hand blown lead crystal, twisted and shaped to achieve their unique design. Very chic!



Alabaster CLASSIC

In the realm of interior lighting, alabaster has proven through the ages to be one of the man's best materials for lending atmosphere and ambiance to chandeliers in any room setting. It provides an excellent natural light diffuser that is both elegant and practical. When the light filters through, the natural veining of the rock enhances its' charm. Alabaster is fashioned out of the rock quarries of Northern Spain, with their abundant supply of this unusual rock. With its translucent characteristics, it adds warmth and beauty to the solid brass frames.

To meet the ever-changing demands of interior designs, furnishings and colors, Classic offers varied finishes for these alabaster frames. There are the bronze tones of burnished antique bronze, satin bronze with brown or black patina and the silver tones of silver oxide, pewter and Millennium Silver with black in the crevices to bring out the beautiful detail of the castings..

Classic as a prime source of alabaster lighting enables the homeowner to use diverse alabaster fixture designs and lighting configurations throughout the house with matching units and finishes because Classic is cognoscente of the fact that one just doesn't supply dining room chandeliers but rather have coordinating fixtures to match such as hand-sculptured wall sconces, flush and semi-flush ceiling fixtures, pendants, and wall brackets to complete the ensemble. We recommend 40W bulbs maximum whenever possible – but never more than 60W to avoid heat discoloration.

MALLORCA



5624 ABZ - 18 Lights

From the shores of sunny Spain, Classic designed this bold, handsome series of heavy cast solid brass fixtures. The series features finely chiseled arms with mirror-smooth front surfaces and finely detailed engraved sides that enhance the natural alabaster bowls and shades.

A real statement piece.
Three tiers and 47 lights.
The lower tier center bowl
measures 36" inches.



5626 ABZ - 47 Lights
50"W x 70"H

The finish is an antique bronze (ABZ) that gives each unit character and an authentic aged look. The process slightly darkens the smooth surfaces and adds depth to the detail in the engraved crevices.

MALLORCA



5600/30 ABZ - 6 Lights
30"W x 34"H



5600/24 ABZ - 3 Lights
24"W x 30"H

Large imposing, rich cream alabaster bowl pendants with concealed lights. A dramatic way to light up any room setting.




5600/36 ABZ - 8 Lights
36"W x 52"H

MALLORCA

The Mallorca "family" of matching fixtures.




5621 ABZ - 1 Light
7"W x 8"H x 11"D




5620 ABZ - 2 Lights
14"W x 10"H



5625 ABZ - 6+1 Lights
30"W x 26"H



5627 ABZ - 6 Lights
29"W x 22"H



5623 ABZ - 6+2 Lights
32"W x 18"H

ABZ Antique Bronze



5622 ABZ - 2 Lights
16"W x 8"H x 9"D



5628 ABZ - 6+2 Lights
32"W x 21"H



5629 ABZ - 8+4 Lights
39"W x 29"H

Single tier chandeliers for that lower ceiling application.

ALHAMBRA

ANTIQUÉ BRONZE



56024 ABR - 36 Lights
48"W x 69"H

Unique heavy cast solid brass "twist" arms and matching rods hold the massive natural alabaster stone bowls and shades.



56094 SO - 36 Lights
48"W x 69"H

This series is offered in either a traditional Antique Brass (ABR) or rich contemporary Silver Oxide (SO) finish. Antique brass comes with cream alabaster, Silver oxide with white alabaster. Must specify finish code when ordering.

ALHAMBRA



56020 ABR - 2 Lights
14"W x 10"H

56090 SO - 2 Lights



56027 ABR - 6+1 Lights
27"W x 31"H

56097 SO - 6+1 Lights



56022 ABR - 2 Lights
16"W x 10"H x 9"D

56092 SO - 2 Lights



56026 ABR - 6 Lights
27"W x 26"H

56096 SO - 6 Lights

Antique Brass comes with cream and
Silver Oxide with white alabaster.

Not shown



SILVER OXIDE




56099 SO - 8(+4)+4(+1) Lights
38"W x 39"H

56099 ABR - 8(+4)+4(+1) Lights

Suffix finish code when ordering:
ABR Antique Brass
SO Silver Oxide

ALHAMBRA

ANTIQUE
BRASS



56000/24 ABR - 3 Lights
24"W x 30"H



56000/30 ABR - 6 Lights
30"W x 34"H

SILVER OXIDE



56000/36 SO - 8 Lights
36"W x 52"H

Large alabaster bowl pendants with concealed lights. The metalwork is available in either Antique Brass (ABR) with cream alabaster or Silver Oxide (SO) with white alabaster to match the rest of the series.

Suffix finish code when ordering:

ABR Antique Brass
SO Silver Oxide

MONICA



56222 SBK - 2 Lights
17"W x 10"H x 9"D



56225 SBK - 5 Lights
25"W x 21"H



56228 SBK - 8 Lights
32"W x 25"H

The Monica collection features a Romanesque design cleverly accented with natural alabaster veneers in the body and column then draped with decorative beaded chains. The "bell" shaped shades complete the all-alabaster look.

SATIN BRONZE
WITH BLACK PATINA



56229 SBK - 8(+4) + 4(+4) Lights
43"W x 34"H

This collection is offered in Satin Bronze with Black Patina (SBK) or Satin Bronze with White Patina (SBW). Always specify finish when ordering.

MARIE ANTOINETTE



56323 BBZ - 3 Lights
17"W x 18"H



56322 BBZ - 2 Lights
15"W x 11"H X 8"D



56328 BBZ - 8(+3) Lights
40"W x 30"H



56324 BBZ - 3 Lights
21"W x 30"H



56321 BBZ - 1 Light
12"W x 7"H X 6"D



56326 BBZ - 6(+1) Lights
30"W x 30"H

Spanish solid bronze cast frames in Brushed Bronze finish (BBZ) with hand-carved cream alabaster.

MARIE ANTOINETTE



56329 BBZ - 10(+3)+5 Lights
42"W x 44"H

Spanish solid bronze cast frames supplied in Classic's new Brushed Bronze finish (BBZ). The cream alabaster bowls and shades are meticulously hand-carved to achieve this sculptured design.

MORENA



55602 SBB - 2 Lights
15"W x 8"H x 9"D



55603 SBB - 2 Lights
18"W x 23"H



55606 SBB - 6(+2) Lights
29"W x 26"H

Highly detailed cast solid brass frames hold the sculptured cream alabaster bowls and shades. Finished in Satin Bronze with Brown Patina (SBB).

DEVON



55502 SBB - 2 Lights
18"W x 7"H x 9.5"D



55503 SBB - 2 Lights
13"W x 15"H



55505 SBB - 3 Lights
22"W x 29"H



55506 SBB - 6(+2) Lights
32"W x 27"H

Heavy cast solid brass empire style frames support the fluted alabaster bowls and shades. Offered in traditional Satin Bronze with Brown Patina finish (SBB) with cream alabaster or Pewter finish (PTR) with white alabaster.

SATIN BRONZE
WITH BROWN PATINA



55509 SBB - 6(+3) + 3(+2) Lights
38"W x 39"H

Suffix finish code when ordering:

PTR Pewter

SBB Satin Bronze with Brown Patina

DEVON



55502 PTR - 2 Lights
18"W x 7"H x 9.5"D



55503 PTR - 2 Lights
13"W x 15"H

55505 PTR - 3 Lights
22"W x 29"H



55506 PTR - 6(+2) Lights
32"W x 27"H

Suffix finish code when ordering:

PTR Pewter

SBB Satin Bronze with Brown Patina



55509 PTR - 6(+3) + 3(+2) Lights
38"W x 39"H

NAVARRA



7485 CRM - 1 Light
12"W x 6"H x 6"D



7485 W - 1 Light
12"W x 6"H x 6"D



7480 CRM - 1 Light
12"W x 6"H x 4.5"D



7480 W - 1 Light
12"W x 6"H x 4.5"D



7484 CRM - 1 Light
12"W x 6"H x 6"D



7484 W - 1 Light
12"W x 6"H x 6"D



7483 CRM - 1 Light
12"W x 7"H x 6"D



7483 W - 1 Light
12"W x 7"H x 6"D

Bulbs 40W maximum.
All sconces

Some sconces are furnished in both cream and white finishes.
When ordering, make sure to specify the suffix code:
CRM Cream
W White



7482 W - 1 Light
14"W x 5"H x 7"D



7481 W - 1 Light
13.5"W x 7"H x 6.5"D



7431 W - 1 Light
12"W x 4"H x 6"D



7486 CRM - 1 Light
10.5"W x 12"H x 5"D



7442 W - 1 Light
12"W x 7"H x 6"D



7441 W - 1 Light
12"W x 7"H x 6"D



7486 W - 1 Light
10.5"W x 12"H x 5"D

Alabaster wall sconces sculptured out of the rock quarries of northern Spain are suitable for all types of decorating schemes. Great for ambiance or functional lighting - residential or commercial.

ALEXANDRIA I

Solid bronze cast frames with authentic hand-carved alabaster. Exquisite styling, exclusive designs, heavy cast metalwork at unbelievably affordable cost.

© copyright 2001



69606 SBB - 6(+3) Lights
32"W x 24"H



69604 SBB - 4 Lights
15"W x 15"H



69608 SBB - 8(+4) Lights
36"W x 25"H

This series offered in either satin bronze with brown patina (SBB) or Victorian Bronze (VBZ).

Suffix finish code when ordering:
SBB Satin Bronze With Brown Patina
VBZ Victorian Bronze

ALABASTER STONE



69605 VBZ - 5 Lights
20"W x 24"H



69602 VBZ - 2 Lights
17"W x 9"H x 10"D



69609 VBZ - 6(+3)+3 Lights
32"W x 32"H

ALABASTER STONE

ALEXANDRIA I

Suffix finish code when ordering:
SBB Satin Bronze With Brown Patina
VBZ Victorian Bronze



69616 SBB - 8(+5)+4(+3)+4 Lights
46"W x 45"H

ALABASTER GLASS

ALEXANDRIA II

This version offers the same solid cast bronze frames but with economical faux alabaster glass.

69516 VBZ - 8(+5)+4(+3)+4 Lights
46"W x 45"H



69503 VBZ - 3 Lights
13"W x 8"H



69504 VBZ - 4 Lights
15"W x 15"H



69506 VBZ - 6(+3) Lights
32"W x 24"H



69508 VBZ - 8(+4) Lights
36"W x 25"H

This series is offered in a wide variety of sizes to meet any decorating need. This includes a large foyer entrance piece - see previous pages.

ALEXANDRIA II

ALABASTER GLASS



69505 SBB - 5 Lights
20"W x 24"H



69502 SBB - 2 Lights
17"W x 9"H x 10"D



69509 SBB - 6(+3)+3 Lights
32"W x 32"H

Suffix finish code when ordering:
SBB Satin Bronze With Brown Patina
VBZ Victorian Bronze

VICTORIAN I



68803 VBZ - 3 Lights
13"W x 15"H



68805 VBZ - 5+1 Lights
28"W x 25"H



68808 VBZ - 8+1 Lights
32"W x 32"H

Heavy chased cast solid brass frames are combined with genuine hand-carved Spanish alabaster to create this elegant series for any decorating application. The almost unbelievable affordability of this series makes this the epitome of perceived value.

ALABASTER STONE



68804 MS - 1 Light (100 W)
21"W x 24"H



68802 MS - 2 Lights
16"W x 13"H x 9"D

68806 MS - 6+3 Lights
28"W x 36"H

Suffix finish code when ordering:
MS Millennium Silver
VBZ Victorian Bronze
SBB Satin Bronze Brown Patina

Offered in three popular finishes: Satin Bronze with Brown patina (SBB), darker-toned Victorian Bronze (VBZ) or Millennium Silver (MS). Both the SBB and VBZ are supplied with cream colored sculptured real alabaster bowls and shades; the MS is supplied with white alabaster.

VICTORIAN I

ALABASTER STONE



68809 SBB - 9+6+3 Lights
35"W x 47"H

Ideal for high ceiling entryways.
A definite statement piece at an attractive price.

VICTORIAN II

ALABASTER GLASS



68709 VBZ - 9+6+3 Lights
35"W x 47"H

Heavy chased cast solid brass frames are combined with faux alabaster glass for a superior value without compromising design or quality.

VICTORIAN II



68703 MS - 3 Lights
13"W x 15"H



68705 MS - 5+1 Lights
28"W x 25"H



68708 MS - 8+1 Lights
32"W x 32"H



ALABASTER GLASS



68702 SBB - 2 Lights
16"W x 13"H x 9"D



68706 SBB - 6+3 Lights
28"W x 36"H



68704 SBB - 1 Light (100 W)
21"W x 24"H



Offered in three popular finishes: Satin Bronze with Brown patina (SBB), darker-toned Victorian Bronze (VBZ) or Millennium Silver (MS). Both the SBB and VBZ are supplied with cream colored faux alabaster glass shades; the MS is supplied with white alabaster glass.

Suffix finish code when ordering:
MS Millennium Silver
VBZ Victorian Bronze
SBB Satin Bronze Brown Patina



Alabaster CLASSIC Glass

With the popularity of authentic alabaster stone in lighting, there existed a need for alabaster type fixtures that were more economical. However, by the inherent cost of alabaster, it was not feasible.

However, because of the breakthroughs in glass design, decoration and finishes, there came the birth of simulated alabaster or better known as faux alabaster. It was first developed in Italy and then quickly spread throughout Europe and the Orient.

With Classic's experience in developing great alabaster lighting designs, it was a natural to create comparably handsome lighting collections utilizing faux alabaster glass. The result was inevitable - it has made the alabaster-looking fixtures available to just about everyone. It's like when the jewelry industry found a "diamond look-a-like" known as cubic zirconia.

The availability of trendy and traditional finishes makes these collections most versatile in meeting all decorating needs. Finishes offered are pewter, antique brass, satin nickel, brushed nickel, painted antique bronze, English bronze, Grecian gold, Ivory, oil rubbed bronze, Honey Walnut,

Our faux alabaster glass collections are unsurpassed in looks and cost without sacrificing quality. Our collections have far surpassed all expectations for quick turns and sell ability.

YORKSHIRE

SANDSTONE GLASS



68109 EB SSG
12(+4) + 6(+2) Lights
41"W x 46"H

Add the warmth of sandstone glass to our very popular Yorkshire series and the result is an even better look that is rich and warm.

YORKSHIRE

68119 EB - 3 Lights
16"W x 11"H



68103 EB - 2 Lights
11"W x 6"H x 5.5"D



68107 EB SSG - 6(+2) Lights
27"W x 26"H



68102 EB SSG - 2 Lights
17"W x 11"H x 7"D



68110 EB SSG - 8(+3) Lights
32"W x 33"H

68108 EB - 8(+3) Lights
41"W x 35"H

Not Shown



Never has a collection captured the marketplace as quickly and more completely than Classic's Yorkshire series. The series speaks for itself. Handsome design, great proportions plus the use of our very popular faux alabaster glass from our Roma, Livorno and Medallion collections has made this series a winner.



68109 EB
12(+4) + 6(+2) Lights
41"W x 46"H

Suffix SSG when ordering Sandstone Glass,
otherwise white glass will be supplied.

ENGLISH BRONZE



68101 EB SSG - 2 Lights
11"W x 10"H



68100 EB - 2 Lights
13"W x 8.5"H



68105 EB - 5 Lights
20"W x 27"H



68104 EB SSG - 4 Lights
16"W x 25"H



68106 EB SSG - 6 Lights
24"W x 29"H

Suffix SSG when ordering Sandstone Glass, otherwise white glass will be supplied.



68100 GG - 2 Lights
13"W x 8.5"H



68101 GG - 2 Lights
11"W x 10"H



68104 GG - 4 Lights
16"W x 25"H



68105 GG - 5 Lights
20"W x 27"H



68106 GG - 6 Lights
24"W x 29"H

Note that we supply both the filigree ornament and the round "button" on all our pendants. This gives the buyer or ultimate consumer a choice for a more ornate or simple accent.


GRECIAN GOLD



68119 GG - 3 Lights
16"W x 11"H




68103 GG - 2 Lights
11"W x 6"H x 5.5"D



68107 GG - 6(+2) Lights
27"W x 26"H



68102 GG - 2 Lights
17"W x 11"H x 7"D



68108 GG - 8(+3) Lights
41"W x 35"H

68110 GG - 8(+3) Lights
32"W x 33"H

Not Shown



68109 GG
12(+4) + 6(+2) Lights
41"W x 46"H



VANITY BATH BARS

GRECIAN GOLD

68112 GG - 2 Lights
19"W x 8"H x 10"D



68113 GG - 3 Lights
28"W x 8"H x 10"D



68111 GG - 1 Light
7"W x 9"H x 9"D



68115 GG - 5 Lights
46"W x 8"H x 10"D



68117 GG - 7 Lights
64"W x 8"H x 10"D



ENGLISH BRONZE

68112 EB - 2 Lights
19"W x 8"H x 10"D



68117 EB - 7 Lights
64"W x 8"H x 10"D



68115 EB SSG - 5 Lights
46"W x 8"H x 10"D



68111 EB SSG - 1 Light
7"W x 9"H x 9"D

68113 EB - 3 Lights
28"W x 8"H x 10"D



Suffix SSG when ordering Sandstone Glass, otherwise white glass will be supplied.

YORKSHIRE II



68207 SN - 6(+2) Lights
28"W x 25"H



68202 SN - 2 Lights
15"W x 11.5"H x 8"D



68203 SN - 2 Lights
12"W x 5"H x 6"D



68208 SN - 8(+3) Lights
32"W x 28"H



Sometimes less is more. These contemporary-looking solid brass frames finished in a soft satin nickel finish complement the detailed veining of the alabaster glass center-bowls and shades. To fill all lighting needs in one's home, this series offers a complete line of lighting coordinates - from the large foyer and dining room chandeliers to the hall and vanity bath bars.

© Classic Lighting
Patent Pending



68209 SN
12(+4) + 6(+2) Lights
41"W x 44"H



YORKSHIRE II

68211 SN - 1 Light
7"W x 10"H x 9"D



68212 SN - 2 Lights
20"W x 10"H x 10"D



68213 SN - 3 Lights
29"W x 10"H x 10"D



68215 SN - 5 Lights
43"W x 10"H x 10"D



68200 SN - 3 Lights
15"W x 6"H

68201 SN - 2 Lights
12"W x 10"H



68219 SN - 3 Lights
16"W x 11"H



68204 SN - 3 Lights
20"W x 21"H

68205 SN - 5 Lights
23"W x 27"H



68206 SN - 6 Lights
26"W x 27"H



GLENDALE

ENGLISH BRONZE

68401 EB - 3 Lights
16"W x 11"H



68402 EB - 1 Light
16"W x 9"H



68403 EB - 3 Lights
25"W x 18"H

68400 EB - 1 Light
7"W x 8"H x 9"D



68405 EB - 5 Lights
28"W x 19"H



68412 EB - 2 Lights
18"W x 7"H x 9"D



68413 EB - 3 Lights
24"W x 7"H x 9"D



68414 EB - 4 Lights
36"W x 7"H x 9"D

Inexpensively priced for budget-sensitive lighting projects, track homes or store promotional sales. Inexpensive but with Classic's stamp of quality.

BELLWETHER



7996 ABR - 6 Lights
21"W x 32"H



7996 G - 6 Lights
21"W x 32"H



7996 EB SSG - 6 Lights
21"W x 32"H



7996 PTR - 6 Lights
21"W x 32"H



7996 EB - 6 Lights
21"W x 32"H

Handsome entryway "Bell" lantern with either faux alabaster glass or sandstone glass (SSG) complements many other Classic alabaster glass collections and the Yorkshire series with sandstone glass. Suffix SSG if you want this new sandstone glass, otherwise white glass will be supplied.

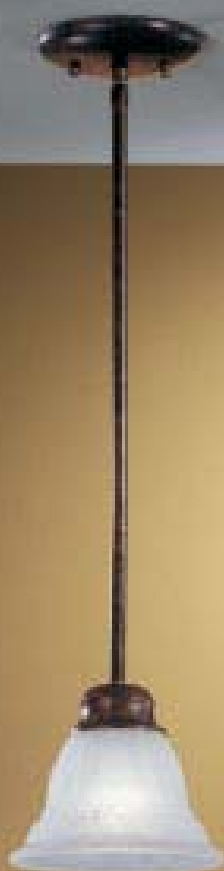
Suffix finish code when ordering:

ABR Antique Brass
EB English Bronze
G Gold
PTR Pewter

SOLO PENDANTS



68000 EB/3 - 1 Light



68000 EB/1 - 1 Light



68000 EB/2 - 1 Light



68000 EB/4 - 1 Light

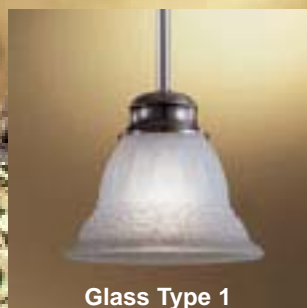


68000 Sand White



68000 Satin Nickel

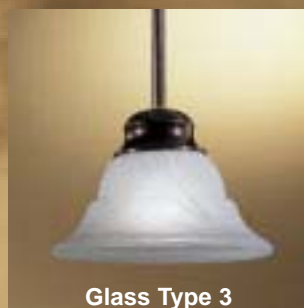
Versatile task light pendants with alabaster glass in English Bronze (EB), Satin Nickel (SN) and Sand White (SW). All pendants adjust from 7" to 45" in height. Eight size options in one SKU. Suffix the glass type number when ordering.



Glass Type 1



Glass Type 2

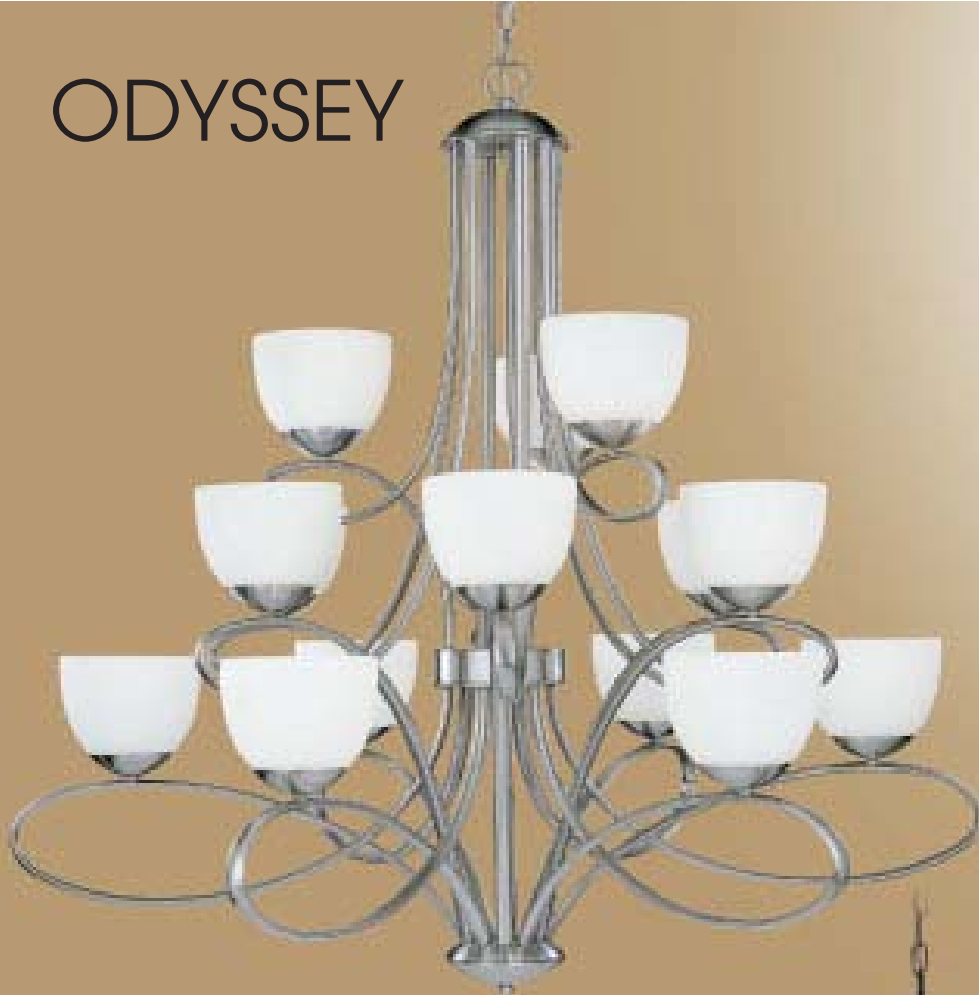


Glass Type 3



Glass Type 4

ODYSSEY



71025 BN - 6+6+3 Lights
42"W x 39"H

Suffix finish code when ordering:

ORB Oil Rubbed Bronze

BN Brushed Nickel

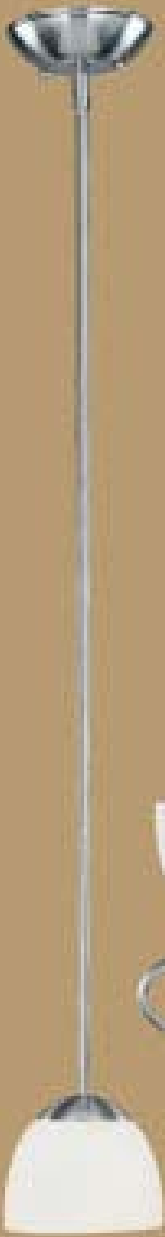


71025 ORB - 6+6+3 Lights
42"W x 39"H

Oval tubing dictates the remaining angles and lines of this exceptionally clean tailored series. All lines flow; cups to glass and graceful sweeping arms. Oil rubbed bronze (ORB) is extremely popular in today's décor.

Also finished in Brushed Nickel (BN) that gives an entire new feel of transitional contemporary without being too forward. Complete grouping includes small boudoir fixtures up to large entry pieces, to vanity bars.

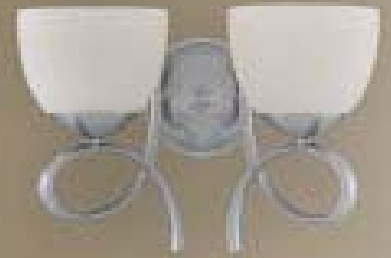
BRUSHED NICKEL



71021 BN -1 Light
6"W x 20" to 56"H



71023 BN - 3 Lights
18"W x 18"H



71022 BN - 2 Lights
15"W x 8"H x 8"D

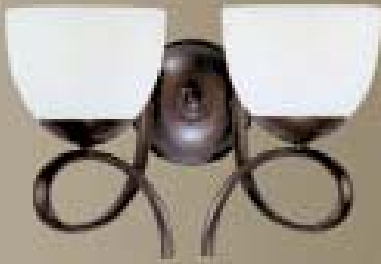


71026 BN - 6 Lights
25"W x 25"H



71028 BN - 8+4 Lights
33"W x 32"H

OIL RUBBED BRONZE



71022 ORB - 2 Lights
15"W x 8"H x 8"D



71023 ORB - 3 Lights
18"W x 18"H



71026 ORB - 6 Lights
25"W x 25"H



71028 ORB - 8+4 Lights
33"W x 32"H



71021 ORB - 1 Light
6"W x 20"H to 56"H

Suffix finish code when ordering:
ORB Oil Rubbed Bronze
BN Brushed Nickel

ODYSSEY



71014 ORB - 4 Lights
36"W x 9"H x 8"D

71011 ORB - 1 Light
7"W x 10"H x 8"D



71013 ORB - 3 Lights
24"W x 9"H x 8"D

71012 ORB - 2 Lights
18"W x 9"H x 8"D



71012 BN - 2 Lights
18"W x 9"H x 8"D

71013 BN - 3 Lights
24"W x 9"H x 8"D



71011 BN - 1 Light
7"W x 10"H x 8"D

71014 BN - 4 Lights
36"W x 9"H x 8"D

Suffix finish codes when ordering:
ORB Oil Rubbed Bronze
BN Brushed Nickel

TAPESTRY



71044 HW - 4 Lights
36"W x 8"H x 9"D



71043 HW - 3 Lights
30"W x 8"H x 9"D



71041 HW - 1 Lights
7"W x 9"H x 9"D



71042 HW - 2 Lights
18"W x 8"H x 9"D

The hand-painted organic pattern on the Tapestry series combined with the wood tone of the Honey Walnut (HW) ironwork is just the right touch for a decorator-styled bath. Lights can be mounted in the UP or DOWN position.

TAPESTRY



71050 HW - 3 Lights
16"W x 19"H



71056 HW - 6 Lights
26"W x 23"H



71052 HW - 2 Lights
14"W x 9"H x 9"D



71058 HW - 8+4 Lights
31"W x 30"H

TAPESTRY



71051 HW - 1 Light
7"W x 14"H minimum



71054 HW - 1 Light
16"W x 9"H



71053 HW - 3 Lights
20"W x 12"H



71055 HW - 3 Lights
20"W x 18"H



71059 HW - 6+6+3 Lights
37"W x 36"H

Individually hand painted organic pattern complemented by rich earthy wood tone finish makes this perfect for many settings. Coordinated ivory shades or beautiful large scalloped glass with a soft cream tone complete this broad series which includes everything from a 1 light pendant, dainty boudoir 3 lighter, 2 tier dining chandelier to bath vanity bars. Metal finished in popular Honey Walnut (HW).

VINTAGE



71031 VBR - 1 Light
7"W x 14"H minimum Chain Hung



71036 VBR - 6 Lights
27"W x 22"H



71032 VBR - 2 Lights
16"W x 10"H x 8"D



71038 VBR - 8+4 Lights
33"W x 25"H

The perfect transition from warm cocoon to period positioning. Tapered arms and dark root beer columns are completed with gorgeous proprietary decorated amber glass.

Vintage Bronze (VBR) finished column, cups and distributors with patina in relief areas and gold accents are complemented and offset by warm honey walnut arms. This broad and complete family fits any setting where warmth is the cornerstone.



71030 VBR - 2 Lights
14"W x 11"H



71033 VBR - 3 Lights
18"W x 23"H



71039 VBR - 12+6+3 Lights
45"W x 35"H

CAPRICE



81017 - 5 Lights
28"W x 27"H



81016 - 5 Lights
28"W x 26"H



81015 - 5 Lights
28"W x 25"H

A decorator's delight. Whimsical chandeliers with fancy colorful fine shades with all glass bubbles to dress up any room setting. Great for informal areas and large enough for dining. Definitely a fashion forward design.

Wrought CLASSIC Iron

Forging iron is an art perfected through the ages. In the primitive days, lighting frames were made almost exclusively of iron that held the torches and oils that burned giving light. In our contemporary times, iron is used more for the need for unusual designs that could only be formed from raw iron than from any other material.

Classic has put together a number of Wrought Iron collections that typify the beauty and design that can only be obtained with this form of material. Some are offered with glass shades, silk shades, others with crystal prisms and others with both. In addition to accessorizing these chandeliers with shades and crystal, we have developed multi-process finishes that are aligned with current color tones in furniture, carpet, tile and furnishings. The warmth of Copper Bronze, charm of Florentine Bronze, elegance of English Bronze, striking look of Ashen Bronze and subtlety of rich multi-layered hand rubbed Honey Walnut are all well represented in our Iron collections.

Country Kitchen and Asheville pot racks in Copper Bronze and English bronze iron finishes add warmth to that important room of the house – the kitchen.

Crystal being such an integral part of our lighting products and history is a natural accessory to enhance our wrought iron collections. We do not just buy pre-packaged fixture frames already with crystal included like most others who import from the orient but rather trim ours with our vast selection of good crystal shapes, colors and qualities plus offer our distributors many crystal options and not just settle for the standard crystal included in the carton.

Adding large crystal almond prisms to the elegant curves and shapes of the Manila II and Siena series softens the bold look. Amber oyster crystal trim on the Asheville grouping provides an alternate mood to the more formal Crystalique-Plus™ French Pendants. Chains of clear beads adorn and provide a stunning contrast to our almost-black Ashen Bronze Elegante family of chandeliers.

Our latest crystal introduced at this January Winter Dallas market (2005), Italian Rock crystal in clear and amber, at a fraction of the cost of quartz crystal, was a resounding success. It is not only featured in the Muir Woods iron series but in many others throughout this catalog.

MANILA



68305 EB - 5 Lights
26"W x 25"H



68302 EB SSG - 2 Lights
16"W x 11"H x 10"D



68308 EB SSG - 8 Lights
36"W x 38"H



68309 EB - 8+4 Lights
48"W x 50"H

For that casual country flair, these handsomely crafted chandeliers with alabaster glass shades give any home warm ambiance. Offered in the dark English Bronze or light Ivory Gold finish. Suffix SSG when ordering Sandstone Glass, otherwise white glass will be supplied.

Suffix finish code when ordering:
EB English Bronze
IG Ivory Gold

MANILA



68305 IG - 5 Lights
26"W x 25"H



68302 IG - 2 Lights
16"W x 11"H x 10"D



68308 IG - 8 Lights
36"W x 38"H

IVORY GOLD



68309 IG - 8+4 Lights
48"W x 50"H

Suffix finish code when ordering:
EB English Bronze
IG Ivory Gold

MANILA II



68312 EB C - 2 Lights
15"W x 18"H x 8"D



68312 EB - 2 Lights
15"W x 15"H x 8"D



68315 EB C - 5 Lights
26"W x 30"H w/crystal
26"W x 25"H w/o crystal



68318 EB - 8 Lights
36"W x 40"H w/crystal
36"W x 38"H w/o crystal

Shades are included with this series. To order separately specify S683.

With the success our Manila series is having (see pages 216-219 in catalog 4500) we decided to offer it with candles, elegant silk shades and crystal accents. It can be purchased with or without crystal. These are only available as shown in a rich English Bronze (EB) finish.

ENGLISH BRONZE

A perfect entryway chandelier -
voluminous but very affordable!
Supersized crystal!



68319 EB C - 8+4 Lights
48"W x 53"H w/crystal
48"W x 48"H w/o crystal

This series is offered with a choice of
crystal grades.

Suffix crystal code if ordered with crystal:

C	Crystalique™
SC	Swarovski Crystal
S	Strass®

HIGHLAND



92102 FI CP - 2 Lights
18"W x 21"H x 9"D



92103 FI
3 Lights
23"W x 27"H



92101 FI
3 Lights
17"W x 12"H



92106 FI - 6 Lights
30"W x 37"H



92108 FI CP - 8 Lights
34"W x 40"H



Like a country breeze and leaves rustling in the trees, this collection brings out the casual, informal but still elegant appearance in decorating. These are furnished in a attractive Florentine Iron (FI) finish and accented with elegant silk shades.

FLORENTINE IRON



Crystalique-Plus™
French Pendalog



92104 FI CP
4 Lights
17"W x 25"H

These can be purchased
with or without French
Pendalog crystal.

Suffix crystal code if ordered
with crystal:

CP Crystalique-Plus™
SC Swarovski Crystal
S Strass®

92109 FI - 6+3 Lights
34"W x 46"H

ASHEVILLE

The intricate metalwork finished in a Copper-Bronze hue (CPB) accessorized with silk shades and crystal accents is perfect for today's shabby chic more casual decor. Also available without crystal.



92205 CPB OAM - 5 Lights
26"W X 29"H



92209 CPB CP - 6+3 Lights
36"W X 53"H

Crystal trim is offered with either "French Pendants" Crystalique-Plus™, Swarovski Crystal, Strass® or amber Oyster prisms.

Always suffix crystal option when ordering:
(or no crystal suffix if ordered without crystal)

CP Crystalique-Plus™
OAM Oyster Amber
SC Swarovski Crystal
S Strass®



92218 CPB OAM
12+6 Lights
46"W X 63"H

ASHEVILLE VANITY LIGHTS

92211 CPB OAM
1 Light
6"W x 16"H x 8"D



92214 CPB CP
4 Lights
31"W x 17"H x 9"D



92213 CPB OAM
3 Lights
23"W x 17"H x 9"D



92212 CPB
2 Lights
16"W x 14"H x 9"D



These can be ordered in a variety of ways: With series matching silk shades or frosted glass with either French Pendants, amber crystal or without crystal. Your choice! Note the glass versions can be installed with the glass facing up or down. Units with crystals can only be positioned with the lights facing up.

92221 CPB OAM
1 Light
6"W x 13"H x 7"D



92224 CPB OAM
4 Lights
29"W x 13"H x 10"D



92223 CPB - 3 Lights
22"W x 11"H x 9"D



92222 CPB - 2 Lights
16"W x 11"H x 9"D

Suffix crystal codes
when ordering:
CP, OAM, SC, and S.

ASHEVILLE



92202 CPB
2 Lights
15"W x 23"H x 10"D



92203 CPB CP - 3 Lights
23"W x 24"H



92201 CPB
3 Lights
17"W x 12"H



92206 CPB OAM - 6 Lights
32"W x 36"H



92204 CPB CP - 4 Lights
21"W x 25"H

Always suffix crystal option when ordering:
(or no crystal suffix if ordered without crystal)

CP Crystalique-Plus™
OAM Amber Oysters
SC Swarovski Crystal
S Strass®

ASHEVILLE



92208 CPB - 6 Lights
40"L x 19"H x 24"W



92200 CPB - 3 Lights
36"L x 24"H x 9"W



92207 CPB - 6+1 Lights (downlight)
30"W x 24"H

These Asheville Kitchen fixtures coordinate with other Asheville dining, foyer, or bath fixtures in your home. Copper Pots sold separately.

COUNTRY KITCHEN



9206 EB - 6 Lights
29"W x 23"H
(Copper Pots optional)



9205 EB - 6 Lights
22"W x 22"H x 39"L
(Copper Pots sold separately)

Bring the warmth of a country kitchen into your home. These pot racks are hand forged to give them texture and authenticity and then finished in English Bronze (EB). They are fashionable and practical. Optional assorted copper pots and pans are available separately. Simply specify "Copper Pots," when ordering. A set consists of 10 pieces.

ALEXIS



92505 FB CP - 5 Lights
24"W x 29"H



92506 FB CP - 6 Lights
30"W x 35"H

Suffix crystal code when ordering:

- CP Crystalique-Plus™
- OCL Oyster Clear
- SC Swarovski Crystal
- S Strass®


Casual elegance is achieved by combining crystal accents and silk shades with wrought iron frames finished in warm Florentine Bronze with satin silver leaves. Notice the intricacies of beaded chains framing the bobeches and adorning the bottom ball founts. Crystal options are either the more traditional French Pendants, in three grades of quality, or more contemporary oyster crystal.




92521 FB OCL - 12+6+3 Lights
56"W x 63"H

A bold and stunning statement piece chandelier for any large foyer or entryway!


ALEXIS



92500 FB CP - 2 Lights
18"W x 17"H
Dual Mount-
Can be flush mounted
or chain hung.



92502 FB OCL - 2 Lights
16"W x 18"H x 9"D



92509 FB CP - 6+3 Lights
34"W x 40"H

Suffix crystal code when ordering:
CP Crystalique-Plus™
OCL Oyster Clear
SC Swarovski Crystal
S Strass®

TUSCANY



92606 TBZ OCL - 6 Lights
28"W x 29"H



92604 TBZ OCL - 4 Lights
18"W x 24"H



92602 TBZ OCL - 2 Lights
16"W x 17"H x 9"D



92609 TBZ OCL - 6 + 3 Lights
32"W x 37"H

Wrought iron frames handsomely embellished with silk shades, crystal chains and oyster crystal in an elegant Tuscany Bronze finish. Crystal rosettes are framed in the arms in cameo fashion to enhance the design.

TOPAZ



92302 CPB - 2 Lights
14"W x 14"H x 9"D



92309 CPB - 9 Lights
32"W x 29"H



92306 CPB - 6 Lights
28"W x 28"H



92303 CPB - 3 Lights
24"W x 18"H



92321 CPB - 12+6+3 Lights
54"W x 46"H

Translucent topaz accents with hand-buffed patina adorn these stylish frames with robust, deeply carved columns. Frames come in a rich Copper Bronze (CPB) multi-toned finish and topped with damask silk shades.

PINEAPPLE



92403 FB - 3 Lights
18"W x 24"H



92409 FB - 6+3 Lights
33"W x 28"H

The pineapple is a symbol of hospitality and the warm, welcoming style of the Pineapple series will add a sense of comfort to any decor. Translucent topaz accents with hand-buffed patina add a rich glow. Available in a dark Florentine Bronze (FB) finish with golden brown highlights and damask silk shades.



92404 FB
4 Lights
19"W x 20"H



92402 FB - 2 Lights
15"W x 15"H x 9"D



92406 FB - 6 Lights
30"W x 26"H

ELEGANTE



81003 ASB - 3 Lights
16"W x 22"H



81002 ASB - 2 Lights
12"W x 17"H x 7"D



81005 ASB - 5 Lights
24"W x 31"H



81008 ASB - 8 Lights
33"W x 39"H

Ashen Bronze (ASB) meets the demand for nearly black finishes that are hard to find today but in demand by leading designers. This very dark finish is stunning with the clear beads and crystal prisms. The sizing fills space without being overbearing or too ornate.

SIENA

3613 EB - 3 Lights
16"W x 18"H

- 3603 EB - 3 Lights**
- 3623 EB - 3 Lights**



3622 EB - 2 Lights
12"W x 22"H x 7"D

- 3602 EB - 2 Lights**
- 3612 EB - 2 Lights**



3616 EB - 6 Lights
28"W x 28"H

- 3606 EB - 6 Lights**
- 3626 EB - 6 Lights**



3629 EB - 8+4 Lights
32"W x 41"H

- 3609 EB - 8+4 Lights**
- 3619 EB - 8+4 Lights**



Hand-painted English Bronze wrought iron leaf chandeliers and matching wall bracket are a decorator's dream. These are furnished with either oversized or more moderate-sized hand-cut Crystalique™ accent prisms or without crystal. Using zero in the third digit of the item number denotes no crystal (i.e. 3606), one for the smaller crystal (3616) and two, the large crystal (3626). Note the addition of the two-tier 8+4-light chandelier for foyers or high ceiling dining rooms.

Fixture heights will vary based on options ordered - without crystal, small crystal or large crystal.

- Not shown**

MUIR WOODS



3736 EB - 6 Lights
27"W x 29"H



3739 EB - 8+4 Lights
32"W x 28"H



3732 EB - 2 Lights
12"W x 8"H x 7"D



3736 EB CP - 6 Lights
27"W x 21"H



3739 EB IRC - 8+4 Lights
32"W x 30"H



3732 EB IRC - 2 Lights
12"W x 9"H x 7"D

Delicate leaves intertwining through branches create a subtle look of natural elegance. Finished in English Bronze, these frames can be optionally dressed with sandstone glass pendants, traditional clear crystal, or the unique Italian Rock™ crystal.



3736 EB SSC - 6 Lights
27"W x 21"H



3739 EB SSC - 8+4 Lights
32"W x 30"H



3732 EB SSC - 2 Lights
12"W x 9"H x 7"D



3736 EB IRA - 6 Lights
27"W x 21"H



3739 EB IRA - 8+4 Lights
32"W x 30"H



3732 EB IRA - 2 Lights
12"W x 9"H x 7"D

Suffix Crystal code when ordering:

- SSC Sandstone Crystal
- CP Crystalique-Plus™
- SC Swarovski Crystal
- S Strass®
- IRA Italian Rock™ Amber
- IRC Italian Rock™ Clear

WESTCHESTER

These iron frames with a shapely combination of angles and curves are complemented by carved column parts finished in a rich, multi-layered Hand Rubbed Walnut (HRW). The neutral wood tones and overall traditional design will coordinate with a wide range of interior decors.



92709 HRW - 8+4 Lights
36"W x 48"H

The Westchester series offers a wide range of sizes and configurations from flush mount to grand foyer chandeliers. Chandeliers are offered with shades as shown here or cream colored glass arm bowls.



92705 HRW - 5 Lights
25"W x 27"H



92704 HRW - 4 Lights
20"W x 22"H



92702 HRW - 2 Lights
16"W x 18"H x 8"D



92701 HRW
1 Light
6"W x 18"H x 9"D



92706 HRW - 6 Lights
31"W x 34"H



92738 HRW - 4+4+8 Lights
38"W x 57"H



92737 HRW - 3+6 Lights
31"W x 46"H

These entryway lanterns are designed to taper on the bottom for optimum viewing from below.

When looking up, the tapered bottom of the fixture does not hide the rest of the frame.

These unique lanterns are made to order when a high ceiling demands a tall fixture.

When dealing with a tall entryway, start with these lanterns and build a total lighting package with the coordinating dining chandeliers available with fabric shades or glass arm bowls, then add on some wall brackets, flush mounts, or bathroom vanities.

The Westchester series offers many options.



92713 HRW - 3 Lights
15"W x 9"H



92710 HRW - 2 Lights
16"W x 18"H x 8"H



92717 HRW - 1 Light
16"W x 22"H



92718 HRW - 4 Lights
21"W x 29"H



92732 HRW - 2 Lights
19"W x 10"H x 10"D



92733 HRW - 3 Lights
25"W x 10"H x 10"D

WESTCHESTER

Cream colored glass is offered on the Westchester series chandeliers as an alternative to the fabric shades shown on prior pages. This soft, warm glass diffuses the light into a soft glow and is the same glass offered in the matching flush mount, pendant, vanities, and sconce.



92719 HRW - 8+4 Lights
37"W x 48"H



92715 HRW - 5 Lights
26"W x 25"H



92714 HRW - 4 Lights
17"W x 18"H x 9"D



92711 HRW
1 Light
9"W x 18"H x 10"D



92712 HRW - 2 Lights
17"W x 18"H x 9"D



92716 HRW - 6 Lights
31"W x 34"H

PARADISO



3682 RSB SSG - 2 Lights
14"W x 17"H x 7"D



3685 RSB SSG - 5 Lights
22"W x 23"H



3688 RSB SSG - 8 Lights
26"W x 25"H

Wrought iron frames in Rustic Bronze (RSB) with laurel leaf drapes and sandstone glass bobeches. The soft warm sandstone glass combined with bronze metalwork achieves a simple elegance that complements virtually any décor.



CLASSIC WILLIAMSBURGS



6774 PB - 6+6+6+6 Lights
32"W x 38"H



6776 PB - 8+4+4 Lights
27"W x 31"H



6771 PB - 12+6+3 Lights
32"W x 34"H

"Williamsburgs", as they are called in the industry, are an integral part of interior lighting and Classic Lighting. We have been importing Williamsburgs since 1976 and created many of the designs ourselves. All are made of solid brass; not steel, brass plated. Every fixture carries our guarantee of quality.

Classic colonial style Williamsburgs, the best value anywhere offering features such as solid brass, generous proportions and larger dimensions, cast breaks in the deep sweeping arms and round balls and removable cups that permit use of hurricane glass shades.

CLASSIC WILLIAMSBURGS



6763 PB
3 Lights
16"W x 13"H x 10"D



6778 PB - 12+6 Lights
33"W x 26"H



6772 PB - 8+4 Lights
28"W x 23"H




6761 PB - 1 Light
4"W x 13"H x 8"D



6762 PB
2 Lights
13"W x 13"H x 8"D

Highly polished solid brass frames.



 **6767 PB** - 6+1 Lights
24"W x 16"H
Glass not included.



6764 PB - 3 Lights
14"W x 15"H

Downlight units have 3-way switch.



6768 PB - 8 Lights
28"W x 19"H



6770 PB - 5+5 Lights
24"W x 23"H



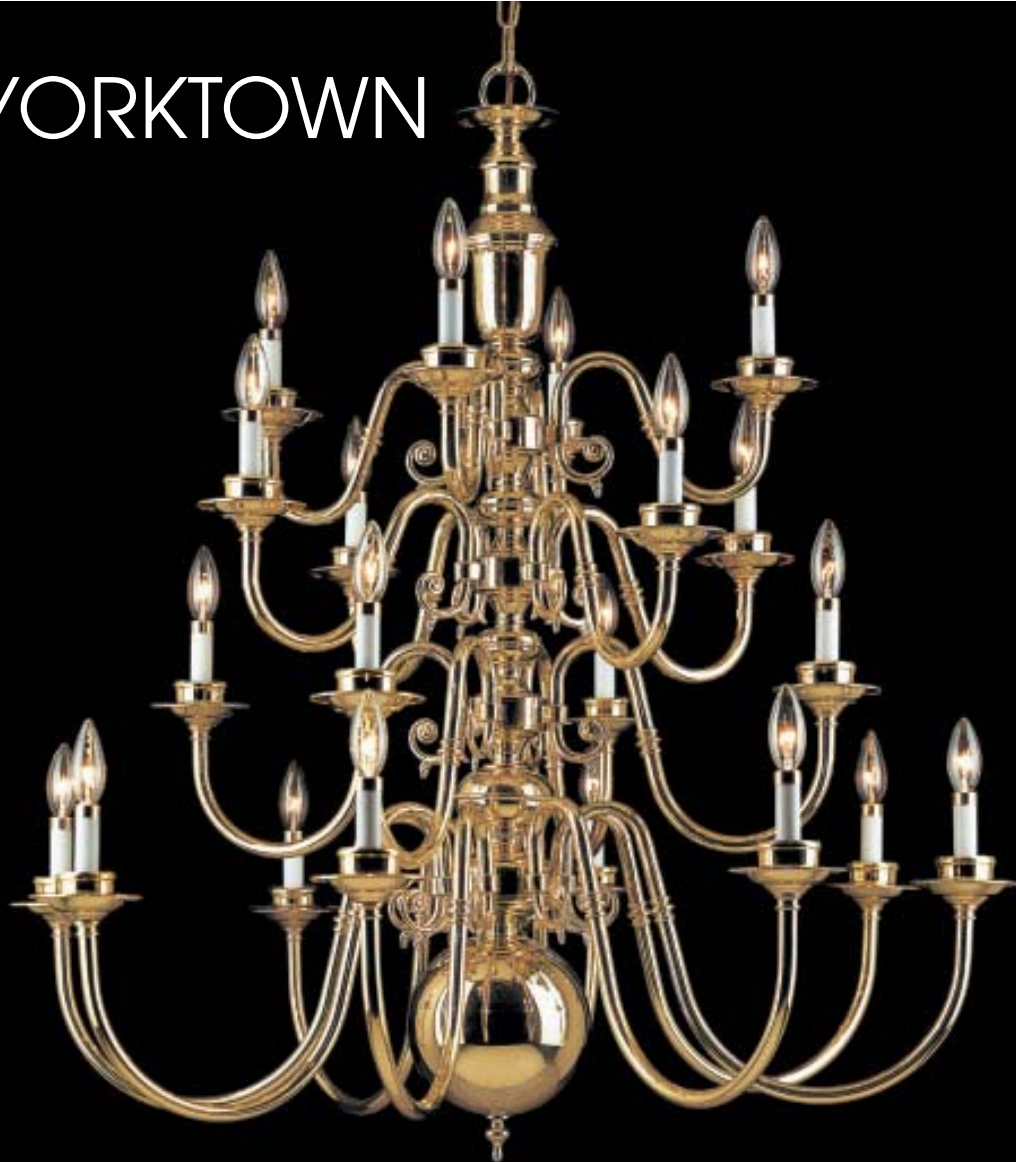
6766 PB - 6 Lights
24"W x 19"H

6765 PB - 5 Lights
24"W x 19"H

Not shown

 Downlight included.

YORKTOWN



6720 - 8+4+4+4 Lights
42"W x 43"H



6702 - 2 Lights
16"W x 19"H x 10"D

Exquisite solid brass fixtures with heavy gauge 16mm arms, cast breaks, stout columns and founts give this series a rich, massive appearance. Yorktown is well suited for both residential and commercial environments.



6712 - 8+4 Lights
30"W x 30"H



6719 - 12+6+3 Lights
42"W x 38"H



6706 - 6 Lights
26"W x 24"H



6708 - 8 Lights
30"W x 26"H



6716 - 8+4+4 Lights
42"W x 38"H

Classic Lighting custom designed these three and four tier heavy looking chandeliers to grace that spacious entryway.

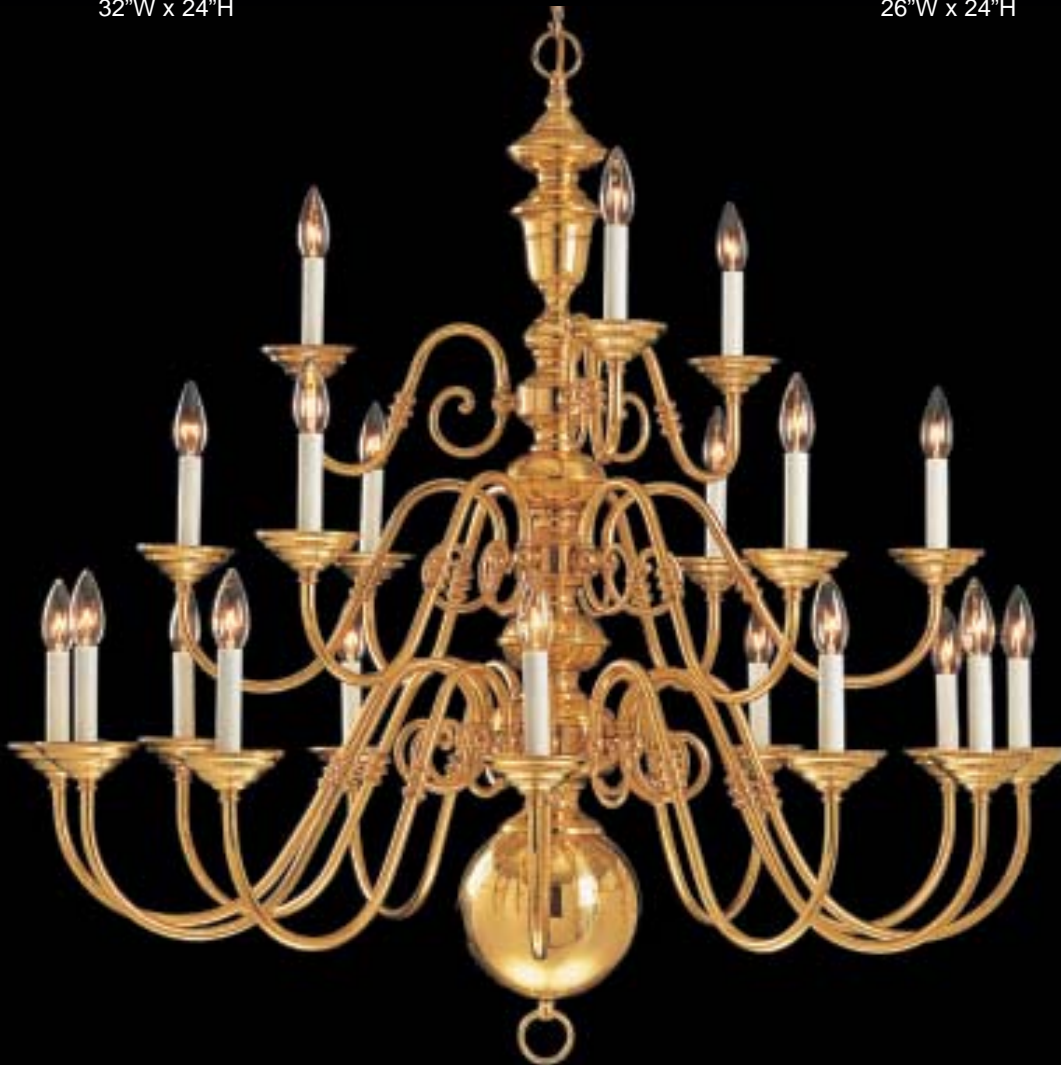
HERMITAGE II



6728 - 8 Lights
32"W x 24"H



6726 - 6 Lights
26"W x 24"H



6721 - 12+6+3 Lights
36"W x 38"H



6724 - 12+6+3+3 Lights
42"W x 47"H



6729 - 8+4 Lights
32"W x 31"H

Distinctive styling and simple detail make these solid brass chandeliers reminiscent of 18th Century America.

JAMESTOWN



6736 - 12+6 Lights
48"W x 35"H



6735 - 12 Lights
48"W x 28"H



6737 - 12+6+3 Lights
48"W x 41"H

These four feet wide chandeliers were designed to meet the needs of low or high ceilings in either residential or commercial applications.

HERMITAGE



6745 - 12+6+3+3 Lights
48"W x 50"H



6755 - 3+2 Lights
23"W x 25"H x 14"D



6752 - 2 Lights
20"W x 20"H x 12"D

Classic's Hermitage collection offers traditional Early American styling with heavy gauge arms and brass castings. This solid brass series is furnished in a wide variety of sizes and light configurations scaled for beautiful residences or commercial establishments.



6753 - 3 Lights
23"W x 20"H x 14"D



6740 - 8 Lights
28"W x 26"H



6746 - 16+8 Lights
60"W x 46"H

HERMITAGE ARCHITECTURAL



6749 - 16+8+4 Lights
72"W x 60"H

Full range of sizes and light configurations to meet all large residential and commercial applications. Ideal for banks, churches, hotels, restaurants, ballrooms, cathedral ceilings, high entryways. Features 14mm gauge arms with stylish solid brass ornamental castings.



6751 - 20+10+5 Lights
84"W x 60"H

See specifications on prior page.

VANDERBILT



67158 - 16+8+4 Lights
44"W x 50"H

Generously proportioned, handsome, highly polished solid brass chandeliers with large diameter arms, accent castings, substantial center columns and full scale bodies. Suitable for both residential and commercial environments where a sense of stateliness is required.



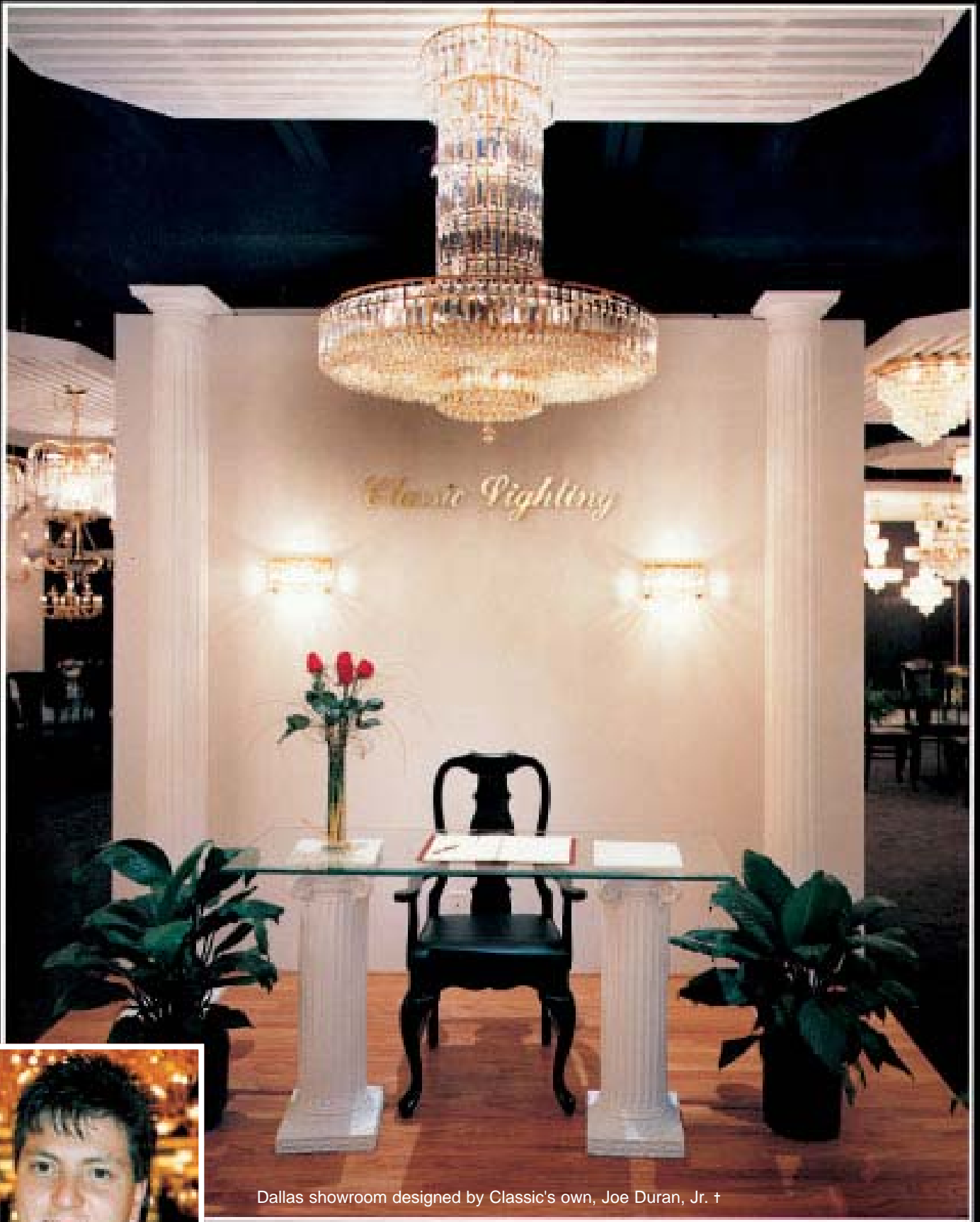
67152 - 8+4 Lights
32"W x 32"H



67159 - 16+8+4+4 Lights
44"W x 61"H

Impressive four-tiered chandelier that will add stature to any home, hotel lobby, country club or church. Designed for two-story foyers cathedral ceilings and commercial applications.

Permanent showroom at the Dallas Trade Mart, Suite 3050.



Dallas showroom designed by Classic's own, Joe Duran, Jr. †



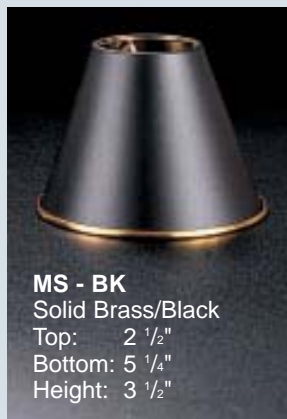
I N D E X

Item Number	Page
1002	109
1011	259
1012	259
1013	258
1014	258
1031	109
1041	109
1051	109
1061	108
1601	102
1603	100
1604	100
1605	101
1606	99
1607	98
1608	98
1620	103
1621	103
1622	103
1623	103
1624	103
1625	103
1626	103
1627	103
1631	110
1650	94
1651	94
1655	94
1656	94
1665	95
1666	95
1670	106
1671	106
1673	106
1674	107
1675	107
1676	106
1680	106

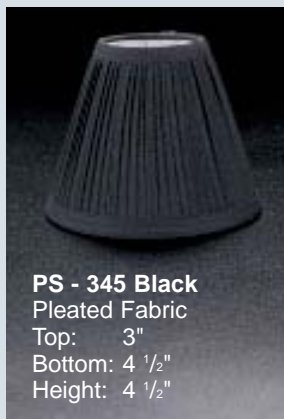
Item Number	Page
1681	106
1683	106
1684	107
1685	107
1686	106
1750	96
1751	96
1752	96
1754	96
1755	93
1756	93
1757	93
1810	90
1815	90
1816	90
1818	91
1830	92
1831	92
1838	92
1839	92
1850	82
1851	83
1852	83
1853	83
1854	83
1855	82
1856	83
1857	83
1858	80
1859	82
1860	81
1870	85
1872	84
1873	84
1874	85
1875	86
1876	86
1877	87

Item Number	Page
1878	89
1879	89
1881	88
1882	88
1883	88
1885	88
1886	88
1887	88
1888	88
3041	256
3042	256
3043	256
3044	256
3045	256
3051	255
3053	254
3055	254
3056	255
3602	222
3604	222
3606	222
3608	222
3612	222
3614	222
3616	222
3618	222
3622	223
3624	223
3626	223
3628	223
3650	221
3652	220,221
3655	220,221
3658	220,221
3659	220,221
4000	206,207
4001	206,207
4005	206,207

Item Number	Page
4009	206,207
4010	206,207
4020	210,211
4021	210,211
4023	210,211
4024	210,211
4028	210,211
4029	210,211
4032	214
4035	214
4038	214
4041	212
4042	212
4043	212
4044	212
4100	208,209
4101	208,209
4102	208,209
4103	208,209
4108	208,209
5204	63
5210	62
5216	62
5221	62
5222	62
5223	62
5227	62
5302	114
5303	116
5304	116
5305	117
5306	114
5308	114
5309	114
5312	113
5313	116
5314	116
5315	117



MS - BK
Solid Brass/Black
Top: 2 1/2"
Bottom: 5 1/4"
Height: 3 1/2"



PS - 345 Black
Pleated Fabric
Top: 3"
Bottom: 4 1/2"
Height: 4 1/2"



PS - 345 Eggshell
Pleated Fabric
Top: 3"
Bottom: 4 1/2"
Height: 4 1/2"



PS - 345 White
Pleated Fabric
Top: 3"
Bottom: 4 1/2"
Height: 4 1/2"

Item Number	Page	Item Number	Page	Item Number	Page	Item Number	Page
5316	113	5648	147	6735	238	7431	179,181
5318	113	5649	147	6736	238	7433	179
5319	113	5660	150	6737	239	7436	179
5322	115	5662	150	6740	240	7440	184
5323	116	5663	150	6741	242	7441	181
5324	116	5664	148,149	6743	241	7442	181
5325	117	5666	151	6744	243	7443	184
5326	115	5667	150	6745	241	7444	184
5328	115	5669	150	6746	245	7445	184
5329	115	5680	150	6746-1	245	7448	182
5402	112	5682	150	6747	245	7454	183
5404	112	5683	150	6748	245	7462	178
5406	112	5684	148,149	6748-1	245	7466	178
5408	112	5686	151	6749	244	7468	178
5409	112	5687	150	6750	245	7469	178
5472	122	5689	150	6750-1	245	7480	180
5474	122	5702	60,61	6751	246	7481	181
5476	122	5705	60,61	6752	240	7482	181
5478	122	5706	60,61	6753	241	7483	180
5479	122	5712	60,61	6754	243	7484	180
5480	119	5718	60,61	6755	240	7485	180
5481	121	5736	58,59	6756	240	7486	181
5482	118,120	5748	56,57	6758	242	7540	126
5484	118,120	5820	125	6761	232	7541	126
5486	118,120	5822	124	6762	232	7544	126
5488	118,120	5826	124	6763	232	7545	126
5489	118,120	5828	124	6764	233	7548	127
5515	63	5829	124	6765	233	7554	128
5518	63	5902	123	6766	233	7996	213
5600/24	144	5905	123	6767	233	8000	10
5600/30	144	5912	123	6768	233	8001	10
5600/36	145	6062	129	6769	233	8002	10
5620	146	6066	129	6770	233	8003	8
5621	146	6068	129	6771	231	8004	10
5622	147	6702	234	6772	232	8007	10
5623	146	6706	235	6774	231	8009	10
5624	142	6708	235	6776	231	8010	8
5625	146	6712	234	6778	232	8013	10
5626	143	6716	235	6801	253	8016	8
5627	146	6719	235	6802	253	8019	9
5628	147	6720	234	6806	252	8024	6
5629	147	6721	236	6808	252	8025	5
5640	146	6722	235	6810	252	8030	7
5641	146	6723	247	6812	252	8101	22,29
5642	147	6724	237	6818	253	8102	22,28
5643	146	6725	247	6821	253	8103	22,29
5644	142	6726	236	6822	251	8105	22,28
5645	146	6727	247	6823	251	8106	29
5646	143	6728	236	6824	250	8110	28
5647	146	6729	237	7430	179	8113	29

<i>Item Number</i>	<i>Page</i>	<i>Item Number</i>	<i>Page</i>	<i>Item Number</i>	<i>Page</i>	<i>Item Number</i>	<i>Page</i>
8115	29	9002	11	52830	65	56000/24	154
8116	28	9003	12	52831	65	56000/30	154
8118	26	9004	11	52832	65	56000/36	155
8120	30	9007	11	53308	104	56020	158
8121	30	9009	11	53310	104	56022	158
8122	30	9010	12	53312	104	56024	152
8123	31	9013	11	53314	104	56026	158
8124	30	9016	12	53318	104	56027	158
8125	31	9019	13	53324	104	56029	159
8126	31	9024	6	53336	105	56090	156
8127	30	9025	5	53408	105	56092	156
8128	27	9030	7	53410	105	56094	153
8129	30	9205	229	53412	105	56096	156
8131	24	9206	229	53414	105	56097	156
8132	22	9273	228	53418	105	56099	157
8133	23	9274	228	53424	105	56120	171
8134	22	9275	228	53436	105	56121	171
8136	23	9276	228	54002	72	56124	171
8137	21	9292	226,227	54005	72	56126	171
8138	25	9293	226,227	54006	74	56190	171
8149	46	9294	226,227	54012	74	56191	171
8159	32	9295	226,227	54024	74	56194	171
8160	34	9296	224,225	54026	72	56196	171
8163	36	40101	189	54036	73	56222	160,162
8166	38	40103	189	54681	77	56225	160,162
8167	40	40105	189	54682	77	56228	160,162
8168	42	40109	189	54686	76	56229	161,163
8169	44,45	40403	188	54688	76	57002	48,52
8179	33	40409	188	54689	77	57003	52,54
8180	35	40411	188	54702	78	57004	48,52
8183	37	51208	66	54704	78	57006	50,54
8186	39	51210	66	54706	78	57012	48,50
8187	41	51312	66	54708	78	57013	52,54
8188	43	51745	68	54709	78	57022	70
8194	29	51750	68	54792	75	57024	55
8260	17,18	51752	68	54796	75	57025	53
8261	17	51754	69	54798	75	57028	70
8262	16	52030	67	54799	75	57029	71
8263	16	52036	67	55502	166,168	57030	49,51
8264	17	52048	67	55503	166,168	67152	248
8265	15	52208	66	55505	166,168	67158	248
8266	15	52210	66	55506	166,168	67159	249
8267	19	52312	66	55509	167,169	67202	133
8269	18	52314	66	55602	170	67204	133
8270	18	52518	66	55603	170	67210	133
8271	18	52824	66	55606	170	67302	134
8272	18	52825	64	55701	164	67310	134
8274	18	52826	64	55702	164	67312	134
8276	18	52827	64	55703	164	67402	135
9000	11	52828	64	55706	164	67403	135
9001	11	52829	64	55709	165	67408	135

<i>Item Number</i>	<i>Page</i>	<i>Item Number</i>	<i>Page</i>	<i>Item Number</i>	<i>Page</i>	<i>Item Number</i>	<i>Page</i>
8115	29	9002	11	52830	65	56000/24	154
8116	28	9003	12	52831	65	56000/30	154
8118	26	9004	11	52832	65	56000/36	155
8120	30	9007	11	53308	104	56020	158
8121	30	9009	11	53310	104	56022	158
8122	30	9010	12	53312	104	56024	152
8123	31	9013	11	53314	104	56026	158
8124	30	9016	12	53318	104	56027	158
8125	31	9019	13	53324	104	56029	159
8126	31	9024	6	53336	105	56090	156
8127	30	9025	5	53408	105	56092	156
8128	27	9030	7	53410	105	56094	153
8129	30	9205	229	53412	105	56096	156
8131	24	9206	229	53414	105	56097	156
8132	22	9273	228	53418	105	56099	157
8133	23	9274	228	53424	105	56120	171
8134	22	9275	228	53436	105	56121	171
8136	23	9276	228	54002	72	56124	171
8137	21	9292	226,227	54005	72	56126	171
8138	25	9293	226,227	54006	74	56190	171
8149	46	9294	226,227	54012	74	56191	171
8159	32	9295	226,227	54024	74	56194	171
8160	34	9296	224,225	54026	72	56196	171
8163	36	40101	189	54036	73	56222	160,162
8166	38	40103	189	54681	77	56225	160,162
8167	40	40105	189	54682	77	56228	160,162
8168	42	40109	189	54686	76	56229	161,163
8169	44,45	40403	188	54688	76	57002	48,52
8179	33	40409	188	54689	77	57003	52,54
8180	35	40411	188	54702	78	57004	48,52
8183	37	51208	66	54704	78	57006	50,54
8186	39	51210	66	54706	78	57012	48,50
8187	41	51312	66	54708	78	57013	52,54
8188	43	51745	68	54709	78	57022	70
8194	29	51750	68	54792	75	57024	55
8260	17,18	51752	68	54796	75	57025	53
8261	17	51754	69	54798	75	57028	70
8262	16	52030	67	54799	75	57029	71
8263	16	52036	67	55502	166,168	57030	49,51
8264	17	52048	67	55503	166,168	67152	248
8265	15	52208	66	55505	166,168	67158	248
8266	15	52210	66	55506	166,168	67159	249
8267	19	52312	66	55509	167,169	67202	133
8269	18	52314	66	55602	170	67204	133
8270	18	52518	66	55603	170	67210	133
8271	18	52824	66	55606	170	67302	134
8272	18	52825	64	55701	164	67310	134
8274	18	52826	64	55702	164	67312	134
8276	18	52827	64	55703	164	67402	135
9000	11	52828	64	55706	164	67403	135
9001	11	52829	64	55709	165	67408	135

<i>Item Number</i>	<i>Page</i>	<i>Item Number</i>	<i>Page</i>	<i>Item Number</i>	<i>Page</i>	<i>Item Number</i>	<i>Page</i>
67502	132	68018	136,138	68203	200	68500	175
67504	132	68019	137,139	68204	203	68501	177
67509	132	68026	140	68205	203	68502	177
67602	130,131	68036	140	68206	203	68503	176
67606	130,131	68100	192,193	68207	200	68506	175
67608	130,131	68101	192,193	68208	200	68508	175
67609	130,131	68102	190,194	68209	201	68511	176
67701	198,199	68103	190,194	68211	202	68512	176
67702	198,199	68104	192,193	68212	202	68513	176
67703	198,199	68105	192,193	68213	202	68521	177
67704	198,199	68106	192,193	68215	202	68522	177
67707	198,199	68107	190,194	68219	203	68523	177
67708	198,199	68108	190,194	68302	216,218	68600	174
67902	186	68109	191,195	68305	216,218	68601	173
67903	186	68110	190,194	68308	216,218	68602	173
67905	186	68111	196,197	68309	217,219	68603	172
67909	187	68112	196,197	68400	204,205	68606	174
67912	187	68113	196,197	68401	204,205	68608	174
68002	136,138,140	68115	196,197	68402	204,205	68611	172
68006	136,138	68117	196,197	68403	204,205	68612	172
68008	136,138	68119	190,194	68405	204,205	68613	172
68009	137,139	68200	203	68412	204,205	68621	173
68012	136,138,140	68201	203	68413	204,205	68622	173
68016	136,138	68202	200	68414	204,205	68623	173

Suffix Codes

Finish Codes:

AB	Antique Bronze	I	Ivory	SGD	Sorrento Gold
ABR	Antique Brass	IB	Ivory-Brown	SO	Silver Oxide
ABZ	Antique Bronze	IG	Ivory Gold	SS	Silverstone
AG	Antique Gold	MS	Millennium Silver	SN	Satin Nickel
AP	Antique Pewter	PB	Polished Brass	SW	Sand White
AS	Antique Silver	PTR	Pewter	V	Verde
BZ	Bronze	R	Rust	W	White
BZO	Bronze Oxidized	RB	Roman Bronze	WC	Weathered Clay
CH	Chrome	RC	Rust Copper	WG	Weathered Gold
CHP	Champagne Pearl	SBB	Satin Bronze with Brown Patina	WW	White Wash
CRM	Cream	SBK	Satin Bronze with Black Patina	Crystal Codes:	
EB	English Bronze	SBW	Satin Bronze with White Patina	C	Crystalique™
FG	French Gold	SG	Silver-Gold	CP	Crystalique-Plus™
G	24k Gold			SC	Swarovski Crystal
GG	Grecian Gold			S	Strass®
GM	24k Gold Matte				

Note:

- The photography in this catalog is as true to life as possible, however there may be some differences between the actual colors and the representations in this catalog.
- Some finishes are individual handmade works of art and may vary. Similarly, some material used, such as Alabaster stone, are unique and may vary from piece to piece.
- Classic Lighting reserves the right to make minor changes or substitutions of parts without prior notification.
- Fixtures may be discontinued from this catalog without prior notice.

<i>Item Number</i>	<i>Page</i>	<i>Item Number</i>	<i>Page</i>	<i>Item Number</i>	<i>Page</i>	<i>Item Number</i>	<i>Page</i>
8115	29	9002	11	52830	65	56000/24	154
8116	28	9003	12	52831	65	56000/30	154
8118	26	9004	11	52832	65	56000/36	155
8120	30	9007	11	53308	104	56020	158
8121	30	9009	11	53310	104	56022	158
8122	30	9010	12	53312	104	56024	152
8123	31	9013	11	53314	104	56026	158
8124	30	9016	12	53318	104	56027	158
8125	31	9019	13	53324	104	56029	159
8126	31	9024	6	53336	105	56090	156
8127	30	9025	5	53408	105	56092	156
8128	27	9030	7	53410	105	56094	153
8129	30	9205	229	53412	105	56096	156
8131	24	9206	229	53414	105	56097	156
8132	22	9273	228	53418	105	56099	157
8133	23	9274	228	53424	105	56120	171
8134	22	9275	228	53436	105	56121	171
8136	23	9276	228	54002	72	56124	171
8137	21	9292	226,227	54005	72	56126	171
8138	25	9293	226,227	54006	74	56190	171
8149	46	9294	226,227	54012	74	56191	171
8159	32	9295	226,227	54024	74	56194	171
8160	34	9296	224,225	54026	72	56196	171
8163	36	40101	189	54036	73	56222	160,162
8166	38	40103	189	54681	77	56225	160,162
8167	40	40105	189	54682	77	56228	160,162
8168	42	40109	189	54686	76	56229	161,163
8169	44,45	40403	188	54688	76	57002	48,52
8179	33	40409	188	54689	77	57003	52,54
8180	35	40411	188	54702	78	57004	48,52
8183	37	51208	66	54704	78	57006	50,54
8186	39	51210	66	54706	78	57012	48,50
8187	41	51312	66	54708	78	57013	52,54
8188	43	51745	68	54709	78	57022	70
8194	29	51750	68	54792	75	57024	55
8260	17,18	51752	68	54796	75	57025	53
8261	17	51754	69	54798	75	57028	70
8262	16	52030	67	54799	75	57029	71
8263	16	52036	67	55502	166,168	57030	49,51
8264	17	52048	67	55503	166,168	67152	248
8265	15	52208	66	55505	166,168	67158	248
8266	15	52210	66	55506	166,168	67159	249
8267	19	52312	66	55509	167,169	67202	133
8269	18	52314	66	55602	170	67204	133
8270	18	52518	66	55603	170	67210	133
8271	18	52824	66	55606	170	67302	134
8272	18	52825	64	55701	164	67310	134
8274	18	52826	64	55702	164	67312	134
8276	18	52827	64	55703	164	67402	135
9000	11	52828	64	55706	164	67403	135
9001	11	52829	64	55709	165	67408	135